

# \$1,129,000 - 405 Erindale Drive, Burlington

MLS® #40777635

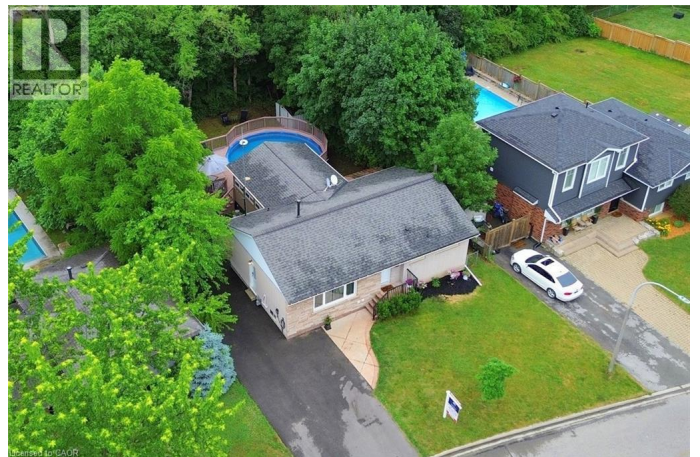
**\$1,129,000**

4 Bedroom, 2.00 Bathroom, 2,250 sqft

Single Family on 0.00 Acres

332 - Elizabeth Gardens, Burlington, Ontario

**SOUTH BURLINGTON SERENITY!!** Tucked away on a peaceful, tree-lined street in Burlington, this charming carpet-free 3+1 bedroom, 2 bathroom home fully equipped with an on ground pool captures the essence of Muskoka living-right in the city. Enjoy the warmth of natural light and hardwood-style flooring throughout, paired with the added bonus of a fully separate basement apartment, perfect for in-laws, guests, or extra income. Whether you're hosting lively summer gatherings, enjoying a peaceful morning swim, or lounging in the sun with your favorite book, this backyard is designed for both fun and tranquility. Surrounded by a spacious patio and lush landscaping, it's the perfect place to unwind, entertain, and create unforgettable memories. As the sun sets, the poolside ambiance transforms into a serene escape under the stars. Welcome to resort-style living—right in your own backyard. This wonderful home is situated in one of the most desirable and walkable neighborhoods. Perfectly positioned, this residence offers unparalleled convenience with grocery stores, public transit, parks, a serene lake, and places of worship all within walking distance. The community is vibrant and friendly, with coffee shops, local restaurants, and everyday essentials just around the corner—no car required. Whether you're looking to simplify your lifestyle, stay connected, or enjoy nature without sacrificing convenience, this location has it all. The upgrades include: basement



apartment 2024, furnace 2024, electrical panel and large windows in basement 2024, A/C, B/I dishwasher and fridge 2021, family room upgrade with all new picture windows and gas fireplace 2020, roof and B/I microwave 2020, expansion of deck area 2019 Whether you're strolling to nearby schools and shops or taking a sunset walk to the lake or forest trails, every day here feels like a retreat. With easy access to major highways, it's an ideal haven for those craving both serenity and connection. Don't miss this one!! (id:6289)

Built in 1963

Essential Information

Listing #	40777635
Price	\$1,129,000
Bedrooms	4
Bathrooms	2.00
Square Footage	2,250
Acres	0.00
Year Built	1963
Type	Single Family
Sub-Type	Freehold
Style	Bungalow

Community Information

Address	405 Erindale Drive
Subdivision	332 - Elizabeth Gardens
City	Burlington
Province	Ontario
Postal Code	L7L4T3

Amenities

Amenities	Place of Worship, Public Transit, Schools, Shopping
Features	In-Law Suite, Private Yard
Parking Spaces	6
View	View of water
Has Pool	Yes

Pool Above ground pool

## Interior

Appliances Dishwasher, Dryer, Refrigerator, Stove, Washer, Microwave Built-in  
Heating Forced air  
Cooling Central air conditioning  
Fireplace Yes  
# of Fireplaces 2  
# of Stories 1  
Has Basement Yes

## Exterior

Exterior Aluminum siding, Brick, Vinyl siding  
Foundation Block

## Listing Details

Listing Office RE/MAX Real Estate Centre Inc.



The trademarks MLS®, Multiple Listing Service® and the associated logos are owned by The Canadian Real Estate Association (CREA) and identify the quality of services provided by real estate professionals who are members of CREA. REALTOR®. Member of CREA and more.

Listing information last updated on October 14th, 2025 at 8:16am PDT