

\$724,900 - 8 Elmbank Trail, Kitchener

MLS® #40775322

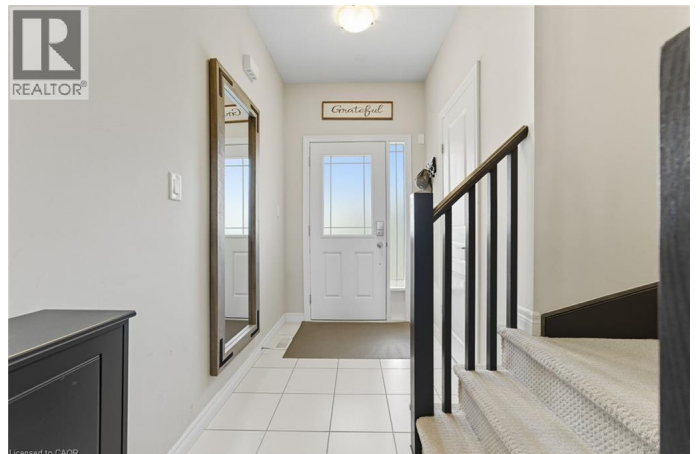
\$724,900

3 Bedroom, 3.00 Bathroom, 1,359 sqft

Single Family on 0.00 Acres

335 - Pioneer Park/Doon/Wyldwoods,
Kitchener, Ontario

Sophisticated Urban Living | Luxurious 3-Bed, 3-Bath Townhome in Prestigious Doon. Welcome to a residence that redefines modern elegance – a meticulously designed 3-bedroom, 3-bathroom townhome nestled in one of the city's most sought-after upscale neighborhoods. Crafted for discerning buyers, this home offers the perfect balance of refined style and contemporary comfort. Step inside to discover a beautifully curated open-concept living space, anchored by a show-stopping gourmet kitchen featuring sleek quartz countertops, stainless-steel appliances, designer fixtures, and beautiful cabinetry with backsplash – ideal for both casual entertaining and elevated culinary experiences. The upstairs stairwell greets you with a stunning feature wall, while the expansive primary suite is a true retreat, offering a generous walk-in closet and 4-piece ensuite with upgraded finishes. Two additional bedrooms provide versatility for guests, a home office, or personal studio space, while the upper-level laundry adds convenience to daily living. Outside, a fully fenced concrete patio invites you to unwind or entertain in style. The attached garage ensures secure parking and additional storage, seamlessly blending practicality with convenience. This home is also equipped with a new furnace and heat pump (2024) which assists with energy reduction and environmental sustainability. Perfectly positioned for those seeking luxury,



convenience, and a low-maintenance lifestyle, this exceptional townhome delivers upscale urban living at its finest. Book your showing today! (id:6289)

Built in 2015

Essential Information

Listing #	40775322
Price	\$724,900
Bedrooms	3
Bathrooms	3.00
Half Baths	1
Square Footage	1,359
Acres	0.00
Year Built	2015
Type	Single Family
Sub-Type	Freehold
Style	2 Level

Community Information

Address	8 Elmbank Trail
Subdivision	335 - Pioneer Park/Doon/Wyldwoods
City	Kitchener
Province	Ontario
Postal Code	N2R0B3

Amenities

Amenities	Park, Playground, Public Transit, Schools, Shopping
Features	Paved driveway, Sump Pump, Automatic Garage Door Opener
Parking Spaces	2
Parking	Attached Garage
# of Garages	1

Interior

Appliances	Dishwasher, Dryer, Refrigerator, Stove, Water softener, Washer, Microwave Built-in, Garage door opener
Heating	Natural gas Forced air, Heat Pump
# of Stories	2

Exterior

Exterior	Brick, Vinyl siding
Foundation	Poured Concrete

Listing Details

Listing Office Re/Max Icon Realty



The trademarks MLS®, Multiple Listing Service® and the associated logos are owned by The Canadian Real Estate Association (CREA) and identify the quality of services provided by real estate professionals who are members of CREA. REALTOR®. Member of CREA and more.

Listing information last updated on October 14th, 2025 at 11:46pm PDT