

\$849,900 - 12 Scheifele Place, Woolwich

MLS® #40773947

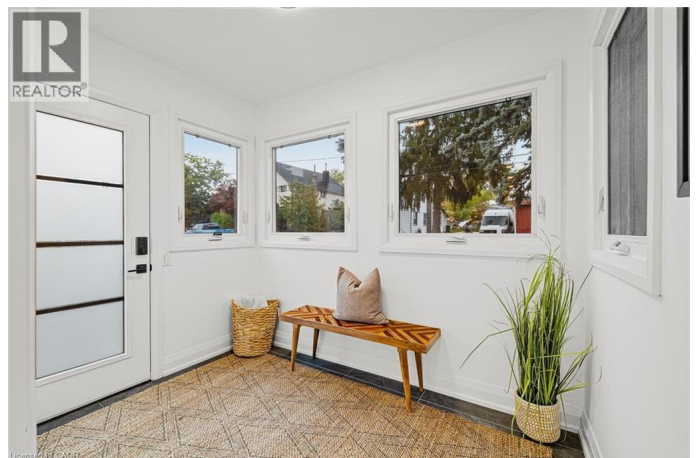
\$849,900

3 Bedroom, 3.00 Bathroom, 2,181 sqft

Single Family on 0.00 Acres

554 - Breslau/Bloomington/Maryhill,
Woolwich, Ontario

A restoration of one of Breslau's original homes, this property has features and charm that can't be found within a subdivision type of home. Entirely professionally renovated, this 3 bedroom, 3 bathroom is loaded with high end, modern design both inside and out. Make your entrance into the sunroom which is the perfect entry way/mud room. Step in through the next matching main door to the home where you are welcomed in to an open concept main floor. The living room with a feature wall and bay windows, a dining room and a stunning kitchen that exudes custom and high end design. This kitchen features an island with a breakfast bar, quartz for both the counters and backsplash, a separate space to create a drink or coffee bar and a sliding patio door leading out the balcony, perfect for BBQ. The quartz counters are matching for every counter throughout the home. Powder room on the main floor. Upstairs features 3 bedrooms and a luxury designed bathroom. The primary bedroom features a door leading to the newly done roof over the attached garage that can be transformed to a private balcony. The second floor luxury bathroom features heated floors, a curbless shower and a soaker tub with a LED mirror and under-cabinet lighting. The basement is fully finished giving you a large Rec room and another 3pc bathroom. The laundry room has been finished for comfort and maximized storage. The exterior features an interlock pathway from the



driveway to backyard. Not one but 2 garages with new roofs on both as well as a shed in the backyard. This home was brought back to life and redesigned to maximize functionality in one of the most desired areas to live. The perfect location to live in quiet but still close to highways for commuting. Within minutes to Waterloo, Kitchener, Cambridge and Guelph, school nearby, library, parks & more. A perfect home to raise a family. Properties like these don't hit the market often, let alone renovated professionally like this. Book your showing today! (id:6289)

Built in 1949

Essential Information

Listing #	40773947
Price	\$849,900
Bedrooms	3
Bathrooms	3.00
Half Baths	1
Square Footage	2,181
Acres	0.00
Year Built	1949
Type	Single Family
Sub-Type	Freehold
Style	2 Level

Community Information

Address	12 Scheifele Place
Subdivision	554 - Breslau/Bloomingdale/Maryhill
City	Woolwich
Province	Ontario
Postal Code	N0B1M0

Amenities

Amenities	Airport, Golf Nearby, Park, Place of Worship, Playground, Public Transit, Schools, Shopping, Ski area
Features	Cul-de-sac, Paved driveway, Automatic Garage Door Opener

Parking Spaces	5
Parking	Attached Garage, Detached Garage
# of Garages	2
View	Lake view

Interior

Appliances	Dishwasher, Dryer, Freezer, Refrigerator, Stove, Washer, Hood Fan, Garage door opener
Heating	Forced air
Cooling	Central air conditioning
# of Stories	2
Has Basement	Yes

Exterior

Exterior	Vinyl siding
Foundation	Poured Concrete

Listing Details

Listing Office	RE/MAX TWIN CITY REALTY INC., BROKERAGE
----------------	---



The trademarks MLS®, Multiple Listing Service® and the associated logos are owned by The Canadian Real Estate Association (CREA) and identify the quality of services provided by real estate professionals who are members of CREA. REALTOR®. Member of CREA and more.

Listing information last updated on October 13th, 2025 at 3:17pm PDT