

\$1,024,898 - 3032 Monarch Drive Drive, Orillia

MLS® #40767351

\$1,024,898

4 Bedroom, 4.00 Bathroom, 2,780 sqft

Single Family on 0.00 Acres

Westridge, Orillia, Ontario

Where Your Family's Next Chapter

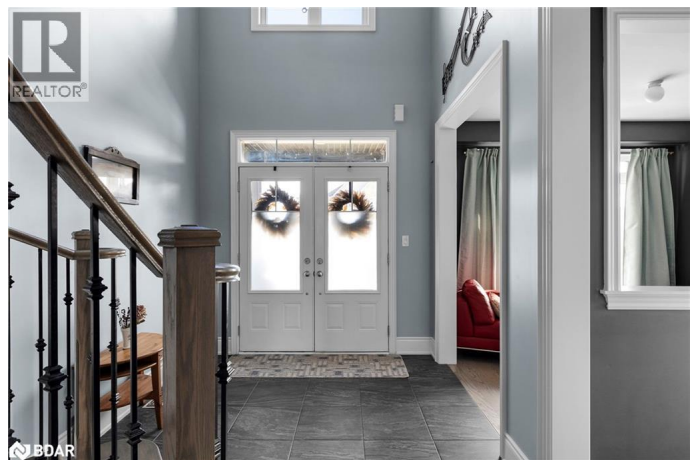
Begins! 4 Bedrooms, Endless Storage & a

Pool-Sized Backyard—Made for Families

This beautiful Royal Amber model on a premium corner lot was designed with growing families in mind. Bright and spacious, every room—even the bathrooms & laundry—has windows that fill the home with natural light.

From the moment you step into the grand, cathedral-ceiling foyer, you'll feel the openness & warmth. With over \$200,000 in builder upgrades, this home blends comfort, function & family-friendly living. 4 generous bedrooms—each with ensuite privileges (no more bathroom line-ups!) Primary retreat with TWO walk-in closets & spa-inspired ensuite. Second oversized bedroom with walk-in closet—both fit king-sized beds. Main-floor office/den for working from home or kids' study space. Full laundry room with commercial washer/dryer, extra cabinets & near linen closet. Smart storage everywhere—mudroom pantry, double closets, garage loft storage. The heart of the home is the open-concept kitchen & great room, perfect for family meals & celebrations.

Enjoy quartz counters, custom backsplash, pot lights, a one-touch faucet, and a built-in boiling water tap. The massive basement with cold cellar gives you endless possibilities for a playroom, gym, or rec room. Step outside to a backyard built for fun and relaxation: Pool-sized yard with forest views—plenty of room for kids to play. Double gate access for



boat, trailer. Stamped concrete patio, raised stone garden, recessed soffit lighting. Extras: central vac, garage door openers, BBQ gas line, HRV, rough-in security system, Ring camera along with 2 additional solar powered surveillance cameras & shed. This is more than a house—it's a place for your family to grow, play, and make memories for years to come. Too many upgrades to list, you really need to come see this one!!! (id:6289)

Built in 2018

Essential Information

Listing #	40767351
Price	\$1,024,898
Bedrooms	4
Bathrooms	4.00
Half Baths	1
Square Footage	2,780
Acres	0.00
Year Built	2018
Type	Single Family
Sub-Type	Freehold
Style	2 Level

Community Information

Address	3032 Monarch Drive Drive
Subdivision	Westridge
City	Orillia
Province	Ontario
Postal Code	L3V8K3

Amenities

Amenities	Beach, Hospital, Park, Place of Worship, Playground, Schools, Shopping, Ski area
Utilities	Cable, Natural Gas, Telephone
Features	Southern exposure, Corner Site, Paved driveway, Sump Pump, Automatic Garage Door Opener
Parking Spaces	5

Parking	Attached Garage
# of Garages	1

Interior

Interior Features	Ceiling fans
Appliances	Central Vacuum, Dishwasher, Dryer, Refrigerator, Water softener, Washer, Range - Gas, Microwave Built-in, Hood Fan, Window Coverings, Garage door opener
Heating	Natural gas Forced air
Cooling	Central air conditioning
Fireplace	Yes
# of Fireplaces	1
# of Stories	2

Exterior

Exterior	Brick, Concrete, Stone, Vinyl siding, Wood, Shingles, Steel
Exterior Features	Landscaped
Construction	Wood frame

Listing Details

Listing Office	Real Broker Ontario Ltd., Brokerage
----------------	-------------------------------------



The trademarks MLS®, Multiple Listing Service® and the associated logos are owned by The Canadian Real Estate Association (CREA) and identify the quality of services provided by real estate professionals who are members of CREA. REALTOR®. Member of CREA and more.

Listing information last updated on October 12th, 2025 at 8:47pm PDT