

\$339,500 - 10 Woodman Drive S Unit# 101, Hamilton

MLS® #40759115

\$339,500

1 Bedroom, 1.00 Bathroom, 490 sqft

Single Family on 0.00 Acres

280 - Greenford, Hamilton, Ontario

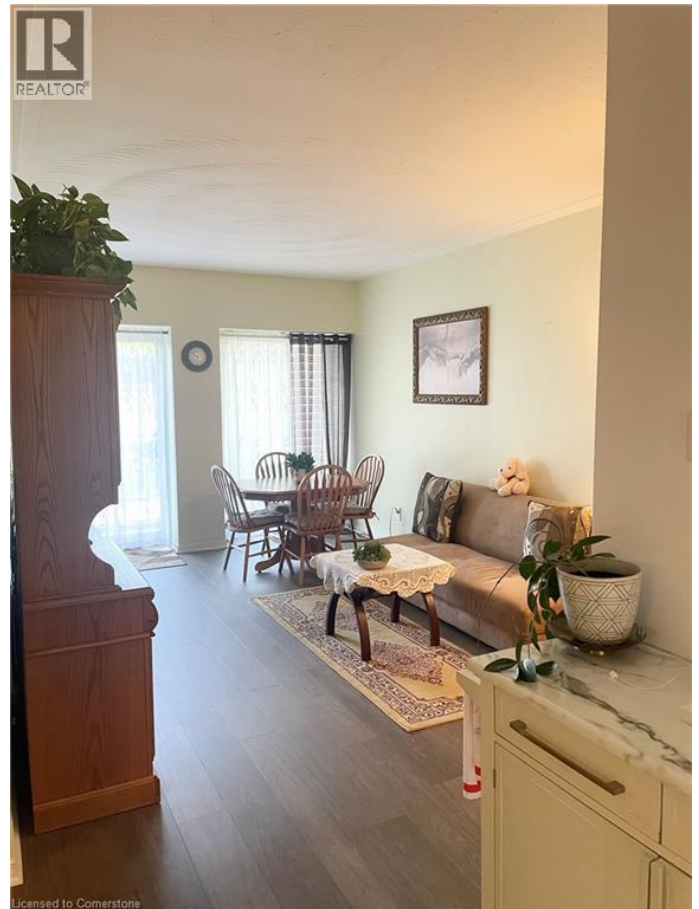
This beautifully maintained condominium is located in a safe, quiet neighborhood and offers both convenience and tranquility. It is a perfect home for first-time homebuyers, downsizers or investors alike. It features 1 generously sized bedroom, 1-bathroom a open concept kitchen, dining and living room combination with a walk out to a spacious balcony/terrace offering year-round enjoyment opportunity. The storage locker provides plenty of space for all your storage need. The home is conveniently located just minutes from the QEW, Red Hill Parkway, just steps away from a bus route, shopping centers, restaurants and other amenities while nestled away from the main road and offers easy access to visitor parking. (id:6289)

Built in 1964

Essential Information

Listings #	40759115
Price	\$339,500
Bedrooms	1
Bathrooms	1.00
Square Footage	490
Acres	0.00
Year Built	1964
Type	Single Family
Sub-Type	Condominium

Community Information



Address 10 Woodman Drive S Unit# 1
Subdivision 280 - Greenford
City Hamilton
Province Ontario
Postal Code L8K4E1

Amenities

Amenities Park, Place of Worship, Public
Features Southern exposure, Balcony
Parking Spaces 1

Interior

Appliances Refrigerator, Stove
Heating Electric Baseboard heaters
Cooling Window air conditioner
of Stories 1

Exterior

Exterior Brick

Listing Details

Listing Office Right at Home Realty



The trademarks MLS®, Multiple Listing Service® and the associated logos are owned by The Canadian Real Estate Association (CREA) and identify the quality of services provided by real estate professionals who are members of CREA. REALTOR®. Member of CREA and more.

Listing information last updated on October 14th, 2025 at 9:46am PDT

