

\$449,900 - 84 St. Joseph's Drive, Hamilton

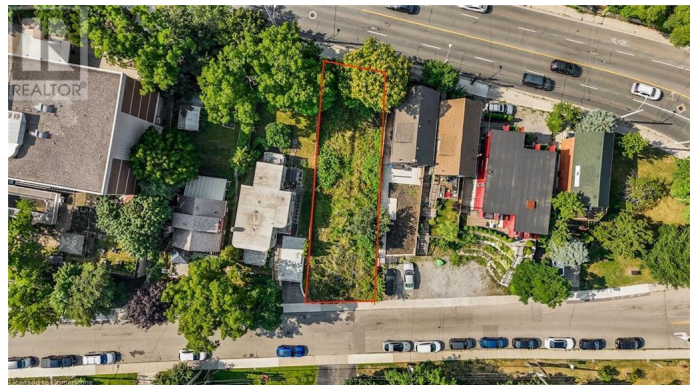
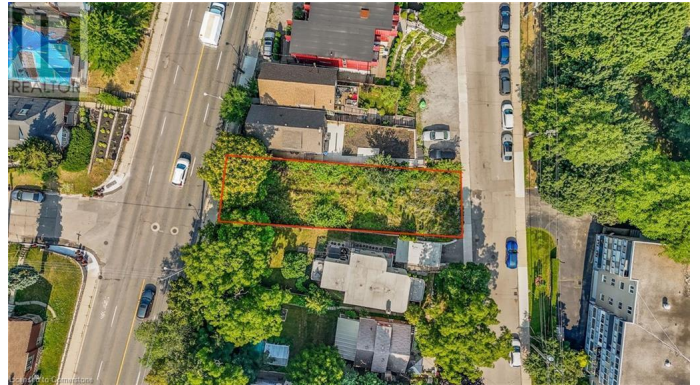
MLS® #40752452

\$449,900

0 Bedroom, 0.00 Bathroom,
Vacant Land on 0.00 Acres

123 - Kirkendall South, Hamilton, Ontario

ONE OF THE MOST PREMIUM LOT / DEVELOPMENT LOCATIONS IN DOWNTOWN HAMILTON IS NOW AVAILABLE..RESIDENTIAL LOT IDEAL FOR MULTI-UNIT OR SINGLE FAMILY DEVELOPMENT -Total Gross Floor Area allowed (including basement) ~7,155 ft SECONDS TO, AND VISIBLE FROM, ST. JOSEPH'S HOSPITAL, JUST OFF JOHN ST.SOUTH & ARKLEDUN AVE. FULLY SERVICED TO LOT LINE. DIRECT ON THE MAIN TRANSIT LINE FROM HAMILTON MOUNTAIN. NO PARKING ALLOWANCE (COUNT) REQUIREMENTS, SURVEY/ GRADE /ELEVATION PLANS AVAILABLE. THROUGH LOT WITH DIRECT STREET ACCESS FROM BOTH ENDS OF PROPERTY. THIS ONE OF A KIND OPPORTUNITY IS AVAILABLE TODAY WITH SOME OF THE MOST COMPETITIVE & AFFORDABLE LAND PRICING IN THE CITY. Vendor willing to entertain possible Vendor Take Back depending on Buyer's situation. CALL LISTING AGENT FOR MORE INFORMATION. (id:6289)



Essential Information

Listings #	40752452
Price	\$449,900
Bathrooms	0.00
Acres	0.00

Type	Vacant Land
Sub-Type	Freehold

Community Information

Address	84 St. Joseph's Drive
Subdivision	123 - Kirkendall South
City	Hamilton
Province	Ontario
Postal Code	L8N2E7

Amenities

Amenities	Hospital, Public Transit, Schools
Utilities	Natural Gas, Water

Listing Details

Listing Office	Michael St. Jean Realty Inc.
----------------	------------------------------



The trademarks MLS®, Multiple Listing Service® and the associated logos are owned by The Canadian Real Estate Association (CREA) and identify the quality of services provided by real estate professionals who are members of CREA. REALTOR®. Member of CREA and more.

Listing information last updated on October 14th, 2025 at 7:31am PDT