

\$220,000 - 22 Helen Drive, Omemee

MLS® #40738362

\$220,000

0 Bedroom, 0.00 Bathroom,
Vacant Land on 0.69 Acres

Omemee (Town), Omemee, Ontario

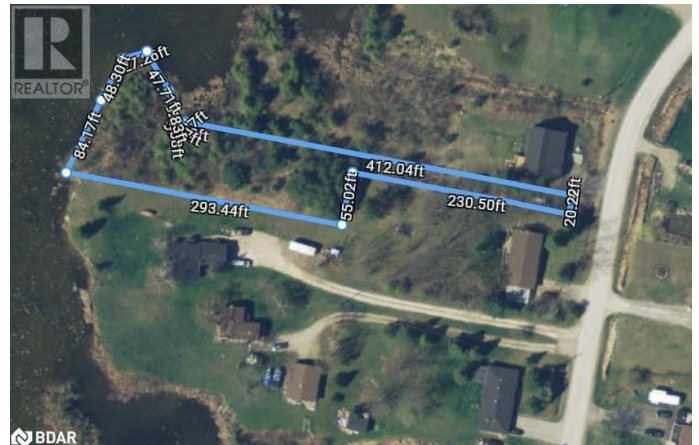
Vacant Waterfront Lot in the Village of Omemee. An exceptional opportunity to own a beautiful vacant waterfront lot in the charming village of Omemee. Boasting 250 feet of frontage on the Pigeon River (Mill Pond), this scenic property offers the perfect setting for fishing, kayaking, and canoeing right from your backyard. Conveniently located on a paved municipal road with natural gas available, the lot offers a prime location between Lindsay and Peterborough. Enjoy tranquil water views and year-round recreational possibilities in a quiet, friendly community. The road frontage is approximately 20 feet. Please note that the red bars shown at the road do not indicate the lot lines, but rather an approximate location of the entrance to the lot. Please do not access the property from neighboring properties. (id:6289)

Essential Information

Listings #	40738362
Price	\$220,000
Bathrooms	0.00
Acres	0.69
Type	Vacant Land
Sub-Type	Freehold

Community Information

Address	22 Helen Drive
Subdivision	Omemee (Town)



City	Omeme
Province	Ontario
Postal Code	K0L2W0

Amenities

Amenities	Schools
Utilities	Cable, Natural Gas
Features	Country residential
View	Direct Water View
Is Waterfront	Yes
Waterfront	Waterfront on river

Listing Details

Listing Office	PD Realty Inc., Brokerage
----------------	---------------------------



The trademarks MLS®, Multiple Listing Service® and the associated logos are owned by The Canadian Real Estate Association (CREA) and identify the quality of services provided by real estate professionals who are members of CREA. REALTOR®. Member of CREA and more.

Listing information last updated on October 13th, 2025 at 5:31am PDT