

\$529,900 - 3398 Pineview, Windsor

MLS® #25025330

\$529,900

3 Bedroom, 2.00 Bathroom,
Single Family on 0.00 Acres

N/A, Windsor, Ontario

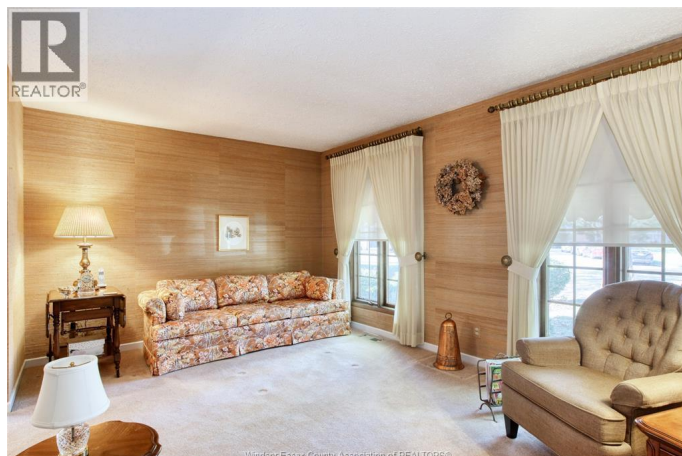
Welcome to 3398 Pineview this charming solid brick 4 level home has so much to offer; Meticulously maintained, this 1 owner home sits on an impressive sprawling pie shaped lot with no rear neighbours & features 3 bdrms, 2 baths, 2 generous bright living areas incl 3rd level w/gas fpplc & space to accommodate a 4th bdrm, formal dining room, eat-in kitchen, 4th level w/laundry & ample storage, + an oversized 1.5 car garage. The fully fenced backyard is sure to impress w/complete privacy in the large irregular size lot, custom built cottage style shed & spacious back patio - all Situated on a peaceful street close to all amenities incl shopping, parks, restaurant, schools & mins to ec row. (id:6289)

Built in 1978

Essential Information

Listing #	25025330
Price	\$529,900
Bedrooms	3
Bathrooms	2.00
Acres	0.00
Year Built	1978
Type	Single Family
Sub-Type	Freehold
Style	4 Level

Community Information



Address	3398 Pineview
Subdivision	N/A
City	Windsor
Province	Ontario
Postal Code	N8R2A8

Amenities

Features	Double width or more driveway, Finished Driveway, Front Driveway
Parking	Garage
# of Garages	1

Interior

Appliances	Dishwasher, Dryer, Refrigerator, Stove, Washer, Two Refrigerators
Heating	Natural gas Forced air, Furnace
Cooling	Central air conditioning
Fireplace	Yes
Fireplaces	Gas

Exterior

Exterior	Brick
Exterior Features	Landscaped
Lot Description	42.16 X 155.77- Irregular
Foundation	Block

Listing Details

Listing Office	REMAX PREFERRED REALTY LTD. - 584
----------------	-----------------------------------



The trademarks MLS®, Multiple Listing Service® and the associated logos are owned by The Canadian Real Estate Association (CREA) and identify the quality of services provided by real estate professionals who are members of CREA. REALTOR®. Member of CREA and more.

Listing information last updated on October 13th, 2025 at 10:16pm PDT