

\$1,149,000 - 3740 Ouellette, Windsor

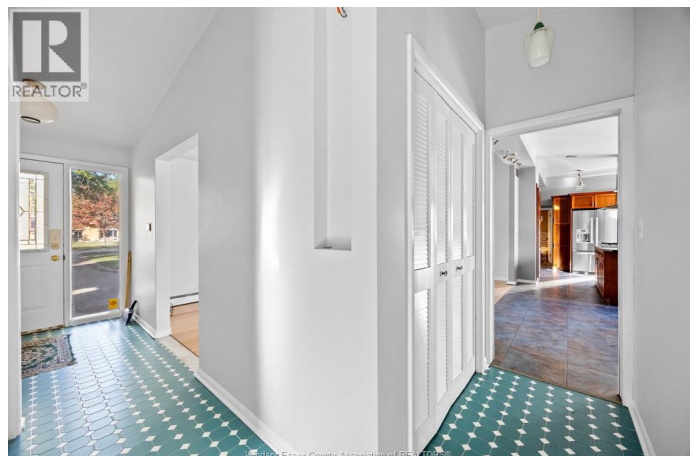
MLS® #25025203

\$1,149,000

4 Bedroom, 4.00 Bathroom,
Single Family on 0.00 Acres

N/A, Windsor, Ontario

SPRAWLING RANCH WITH FANTASTIC IN LAW SUITE AVAILABLE IN ONE OF SOUTH WINDSOR'S MOST PRESTIGIOUS NEIGHBOURHOODS. THIS CLASSIC ONE FLOOR HOME SITS ON AN AMAZING 90 X 125FT LOT. APPROX 2400 SQ FT INCLUDING LARGE LIVING ROOM, FORMAL DINING RM, BEAUTIFULLY UPDATED KITCHEN WITH STAINLESS STEEL BUILT INS, BREAKFAST BAR/ISLAND, GRANITE COUNTERS AND STYLISH FIREPLACE. 3 BEDROOMS INCL MASTER BR WITH 3PC ENSUITE. 4 PC MAIN BATH. CONVENIENT MAIN FLOOR LAUNDRY AND AN ADDITIONAL 2PC POWDER RM. THE IN- LAW (WITH ITS OWN PRIVATE ENTRANCE) WILL APPEAL TO FAMILIES WITH MULTI-GENERATIONAL LIVING OR COULD PROVIDE ADDITIONAL INCOME. IT HAS A LARGE FAMILY ROOM WITH GAS FIREPLACE, KITCHEN AND 4PC BATH. INCREDIBLE RESORTLIKE BACKYARD WITH LARGE INGROUND POOL, PATIO AREAS, GARDENS AND YOUR OWN PUTTING GREEN. LARGE 2 CAR ATTACHED GARAGE. GREAT OPPORTUNITY AWAITS! (id:6289)



Essential Information

Listing #	25025203
Price	\$1,149,000

Bedrooms	4
Bathrooms	4.00
Half Baths	1
Acres	0.00
Type	Single Family
Sub-Type	Freehold
Style	Ranch

Community Information

Address	3740 Ouellette
Subdivision	N/A
City	Windsor
Province	Ontario
Postal Code	N9E3M7

Amenities

Features	Finished Driveway, Front Driveway
Parking	Attached Garage, Garage
# of Garages	2

Interior

Appliances	Cooktop, Dryer, Washer, Oven, Two stoves, Two Refrigerators
Heating	Natural gas Boiler
Cooling	Central air conditioning
Fireplace	Yes
Fireplaces	Electric
# of Stories	1

Exterior

Exterior	Brick
Exterior Features	Landscaped
Lot Description	90 X 125 FT
Foundation	Concrete

Listing Details

Listing Office	ROYAL LEPAGE BINDER REAL ESTATE
----------------	---------------------------------



The trademarks MLS®, Multiple Listing Service® and the associated logos are owned by The Canadian Real Estate Association (CREA) and identify the quality of services provided by real estate professionals who are members of CREA. REALTOR®. Member of CREA and more.

Listing information last updated on October 15th, 2025 at 12:01pm PDT