

\$1,400 - 9610 Esplanade Drive Unit# Lower, Windsor

MLS® #25018525

\$1,400

1 Bedroom, 1.00 Bathroom,
Single Family on 0.00 Acres

N/A, Windsor, Ontario

Very Clean Lower Unit one bed room, large family room, one full bath room, Forest Glade Area. Immediately available. All utilities included. Hydro, Water, Gas, Internet included in total rent. First and Last credit check and one year lease. (id:6289)

Essential Information

Listing #	25018525
Price	\$1,400
Bedrooms	1
Bathrooms	1.00
Acres	0.00
Type	Single Family
Sub-Type	Freehold
Style	Raised ranch

Community Information

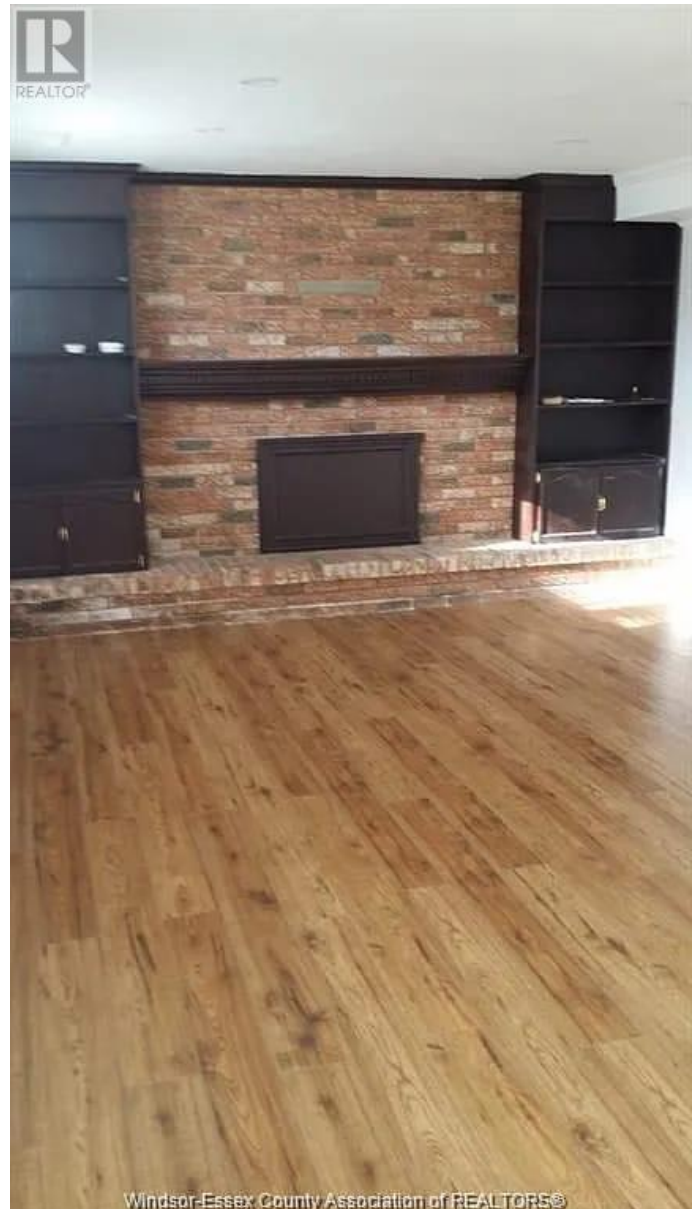
Address	9610 Esplanade Drive Unit# Lower
Subdivision	N/A
City	Windsor
Province	Ontario
Postal Code	N8R1J6

Amenities

Features	Concrete Driveway
----------	-------------------

Interior

Appliances	Dryer, Refrigerator, Stove, Washer
------------	------------------------------------



Heating	Natural gas Forced air
Exterior	
Exterior	Aluminum/Vinyl
Lot Description	57.43 X 110 FT
Foundation	Concrete
Listing Details	
Listing Office	LC PLATINUM REALTY INC.



The trademarks MLS®, Multiple Listing Service® and the associated logos are owned by The Canadian Real Estate Association (CREA) and identify the quality of services provided by real estate professionals who are members of CREA. REALTOR®. Member of CREA and more.

Listing information last updated on October 14th, 2025 at 2:01am PDT