

\$899,900 - 1249 Campana Crescent, Lakeshore

MLS® #25018414

\$899,900

6 Bedroom, 3.00 Bathroom,
Single Family on 0.00 Acres

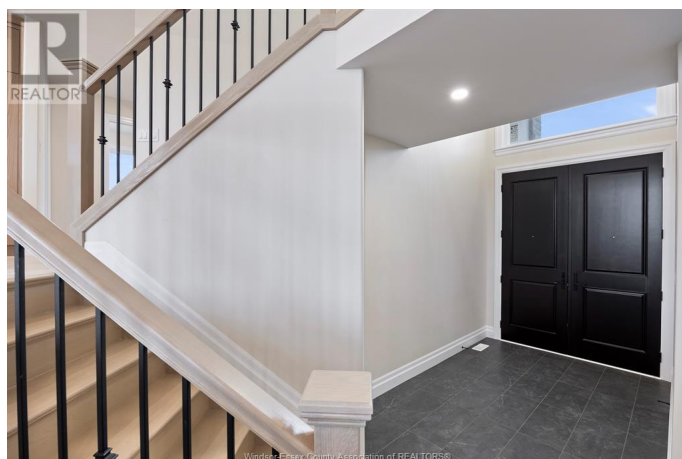
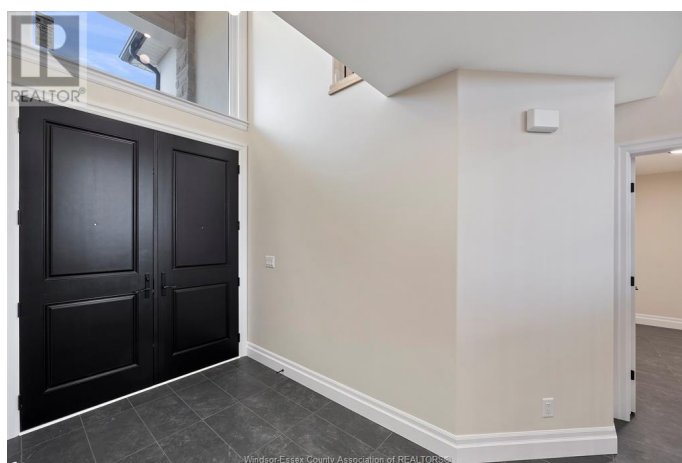
N/A, Lakeshore, Ontario

One of Windsor-Essex best new home deals! This move in ready home built by J.RAUTI CUSTOM HOMES sits on a large 59 x 179 ft lot with no rear neighbors, contains approximately 3500 sq ft of space and has a finished basement and concrete driveway. Featuring a grand foyer with a high ceiling & a spacious mudroom off a finished 2-car garage that contains a grade entrance to the basement. Along the back of the home is an open concept family room with a gas tile fireplace, eating area & a designer kitchen featuring granite countertops. 4 bedrooms upstairs including a large luxurious primary suite, along with 2 more in the lower level. 3 full bathrooms throughout, including the primary ensuite. Finished basement provides large windows for natural light, and a large family room. (id:6289)

Essential Information

Listing #	25018414
Price	\$899,900
Bedrooms	6
Bathrooms	3.00
Acres	0.00
Type	Single Family
Sub-Type	Freehold
Style	4 Level, Raised Ranch w/ Bonus Room

Community Information



Address	1249 Campana Crescent
Subdivision	N/A
City	Lakeshore
Province	Ontario
Postal Code	N8L0K4

Amenities

Features	Double width or more driveway, Concrete Driveway, Finished Driveway, Front Driveway
Parking	Attached Garage, Garage, Inside Entry
# of Garages	2

Interior

Heating	Natural gas Forced air, Furnace, Heat Recovery Ventilation (HRV)
Cooling	Central air conditioning
Fireplace	Yes
Fireplaces	Gas

Exterior

Exterior	Brick, Stone, Concrete/Stucco
Lot Description	59.05 X 179.62 FT
Foundation	Concrete

Listing Details

Listing Office	REMO VALENTE REAL ESTATE (1990) LIMITED
----------------	---



The trademarks MLS®, Multiple Listing Service® and the associated logos are owned by The Canadian Real Estate Association (CREA) and identify the quality of services provided by real estate professionals who are members of CREA. REALTOR®. Member of CREA and more.

Listing information last updated on October 15th, 2025 at 12:01pm PDT