

# \$269,000 - V/I Point Pelee, Leamington

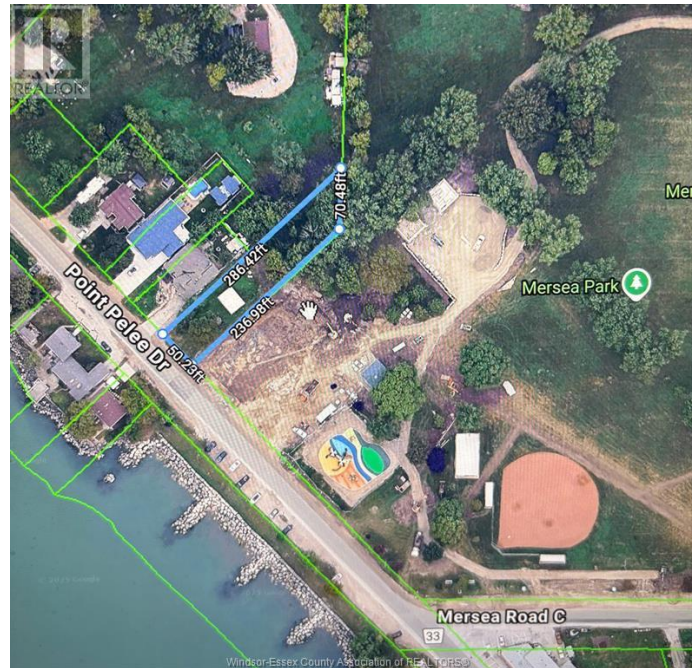
MLS® #25016534

**\$269,000**

0 Bedroom, 0.00 Bathroom,  
Single Family on 0.00 Acres

N/A, Leamington, Ontario

Vacant lot next to 645 Point Pelee Drive, with possible commercial usage, build your dream home or establish a possible business .... sanitary and storm sewers at the lot line, natural gas and municipal water at the lot line, this lot has a view of Lake Erie and is directly across from a public beach and is next to a municipal park, close to restaurants, golf, shopping, kayak rentals and go cart track, only minutes from Leamington, Tim Hortons and Walmart, Sturgeon Woods campground is very close by as is Point Pelee National Park and other conservation areas. This property is under Essex Region Conservation Authority (ERCA) BUYER TO VERIFY ALL INFORMATION. Approx Taxes/Year: \$780/2024. (id:6289)



## Essential Information

Listing #	25016534
Price	\$269,000
Bathrooms	0.00
Acres	0.00
Type	Single Family
Sub-Type	Freehold
Style	Other

## Community Information

Address	V/I Point Pelee
Subdivision	N/A

City	Leamington
Province	Ontario
Postal Code	N8H3V4

### **Amenities**

Parking	Other
---------	-------

### **Interior**

Heating	See Remarks
---------	-------------

### **Exterior**

Exterior	Other
----------	-------

### **Listing Details**

Listing Office	CENTURY 21 LOCAL HOME TEAM REALTY INC.
----------------	--



The trademarks MLS®, Multiple Listing Service® and the associated logos are owned by The Canadian Real Estate Association (CREA) and identify the quality of services provided by real estate professionals who are members of CREA. REALTOR®. Member of CREA and more.

Listing information last updated on October 14th, 2025 at 8:01pm PDT