

\$224,500 - 2064 Summit Drive Unit# 110, Panorama

MLS® #2476508

\$224,500

0 Bedroom, 0.00 Bathroom, 463 sqft

Single Family on 0.00 Acres

Panorama, Panorama, British Columbia

Welcome to 110 1000 Peaks lodge, the newest construction in the upper Village. Easy access to all that Panorama has to offer, skiing, biking, night life, restaurants and more, You are just steps from it all. Fully furnished and equipped for all your needs. (id:6289)

Built in 2016

Essential Information

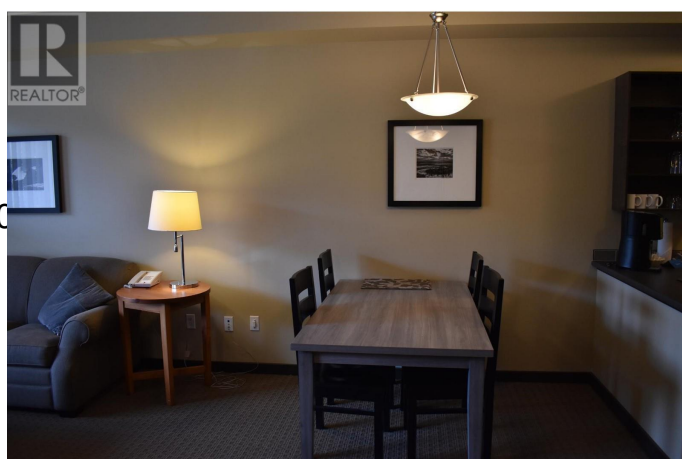
Listing #	2476508
Price	\$224,500
Bathrooms	0.00
Square Footage	463
Acres	0.00
Year Built	2016
Type	Single Family
Sub-Type	Strata

Community Information

Address	2064 Summit Drive Unit# 110
Subdivision	Panorama
City	Panorama
Province	British Columbia
Postal Code	V0A1T0

Amenities

Amenities	Golf Nearby, Recreation, Ski area, Laundry Facility
Features	Corner Site, Central island, One Balcony
Parking Spaces	1



Parking Parkade

Interior

Appliances Refrigerator, Dishwasher, Range - Electric, Microwave

Heating No heat

Fireplace Yes

of Fireplaces 1

Fireplaces Gas

Exterior

Exterior Other

Exterior Features Landscaped

Roof Asphalt shingle

Additional Information

Zoning Recreational

Listing Details

Listing Office MaxWell Rockies Realty



The trademarks MLS®, Multiple Listing Service® and the associated logos are owned by The Canadian Real Estate Association (CREA) and identify the quality of services provided by real estate professionals who are members of CREA. REALTOR®. Member of CREA and more.

Listing information last updated on October 15th, 2025 at 10:01am PDT