

# \$799,000 - Part 1 Of 2652 Lasalle Boulevard, Sudbury

MLS® #2113277

**\$799,000**

0 Bedroom, 0.00 Bathroom,  
Industrial on 3.00 Acres

N/A, Sudbury, Ontario

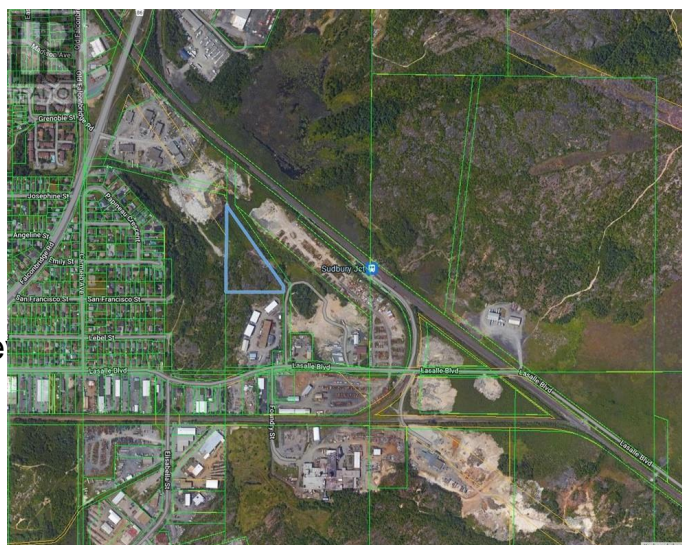
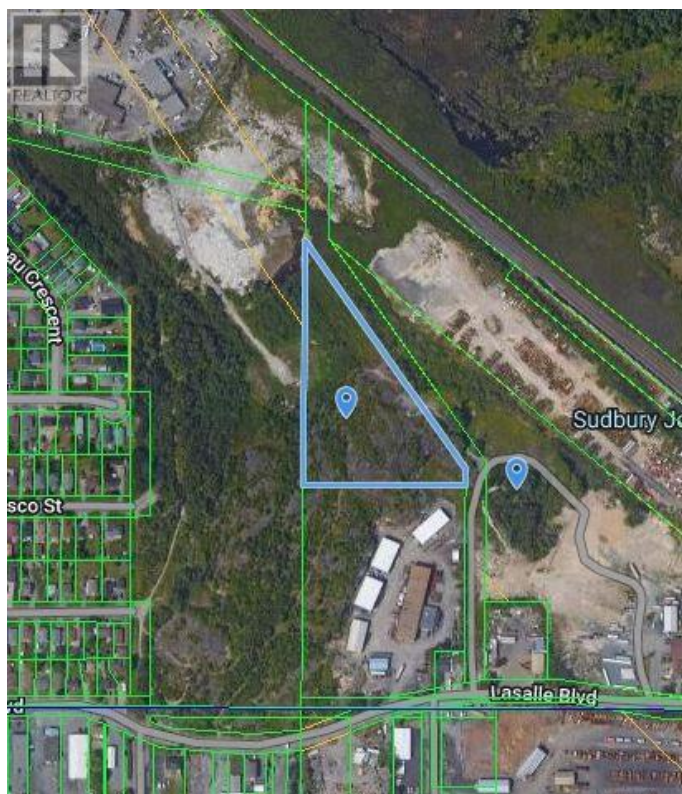
5.082 Acres of M3 Zoned Industrial Land in Prime New Sudbury Location. Property is accessed through a legal 66 foot wide Right Of Way. This property is Part 1 of 2652 Lasalle Blvd. Any buyer should verify with the Greater City of Sudbury as to potential uses for this property. Such as; Blasting Rock and Selling to create a Level building plateau at whatever elevation desirable; Building a structure within the mountain; or any M3 uses that are allowed under this zoning. This property is located at the end of Lasalle Blvd, which is a main artery through New Sudbury, close to all Sudbury amenities and by-passes to outlying areas. (id:6289)

## Essential Information

Listing #	2113277
Price	\$799,000
Bathrooms	0.00
Acres	3.00
Type	Industrial
Sub-Type	Freehold

## Community Information

Address	Part 1 Of 2652 Lasalle Boulevard
Subdivision	N/A
City	Sudbury
Province	Ontario
Postal Code	P3A4R7



## Amenities

Parking                      None

## Listing Details

Listing Office                      NANEFF REALTY LTD, REAL ESTATE BROKERAGE



The trademarks MLS®, Multiple Listing Service® and the associated logos are owned by The Canadian Real Estate Association (CREA) and identify the quality of services provided by real estate professionals who are members of CREA. REALTOR®. Member of CREA and more.

Listing information last updated on October 15th, 2025 at 10:16am PDT