

# \$799,000 - 2652 Part 1 Lasalle Boulevard, Sudbury

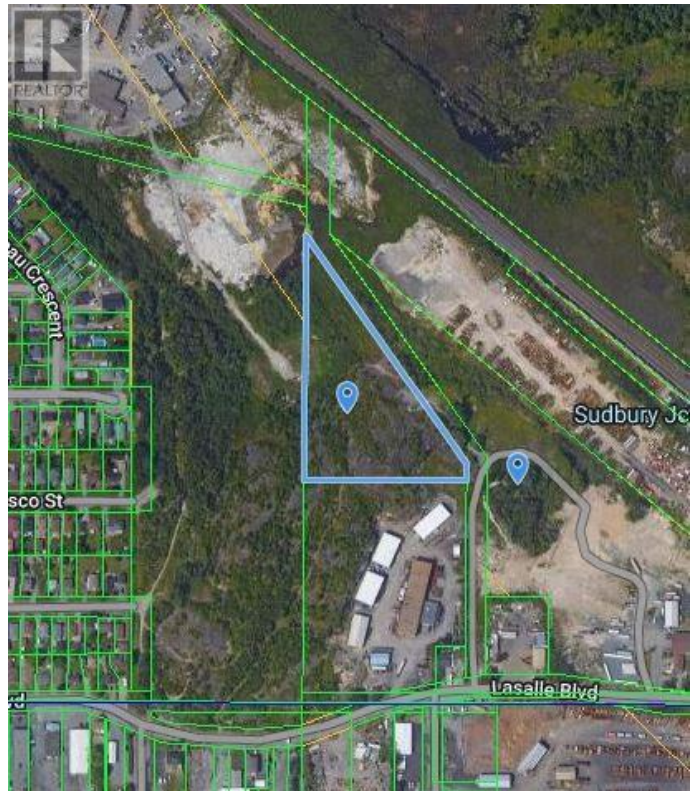
MLS® #2113274

**\$799,000**

0 Bedroom, 0.00 Bathroom,  
Vacant Land on 3.00 Acres

N/A, Sudbury, Ontario

5.082 Acres of M3 Zoned Industrial Land in Prime New Sudbury Location. Property is accessed through a legal 66 foot wide Right Of Way over the whole of 0 Lasalle Blvd, PIN# 735640179 as described in instrument number LT111247. This property is Part 1 of 2652 Lasalle Blvd. but to be accessed by the Right of Way as described above. Any buyer should verify with the Greater City of Sudbury as to potential uses for this property. Such as; Blasting Rock and Selling to create a Level building plateau at whatever elevation desirable; Building a structure within the mountain; or any M3 uses that are allowed under this zoning. This property is located at the end of Lasalle Blvd, which is a main artery through New Sudbury, close to all Sudbury amenities and by-passes to outlying areas. (id:6289)



## Essential Information

Listing #	2113274
Price	\$799,000
Bathrooms	0.00
Acres	3.00
Type	Vacant Land
Sub-Type	Freehold

## Community Information

Address	2652 Part 1 Lasalle Boulevard
Subdivision	N/A

City	Sudbury
Province	Ontario
Postal Code	P3A4R7

### **Amenities**

Parking	None
---------	------

### **Listing Details**

Listing Office	NANEFF REALTY LTD, REAL ESTATE BROKERAGE
----------------	--



The trademarks MLS®, Multiple Listing Service® and the associated logos are owned by The Canadian Real Estate Association (CREA) and identify the quality of services provided by real estate professionals who are members of CREA. REALTOR®. Member of CREA and more.

Listing information last updated on October 14th, 2025 at 12:01pm PDT