

\$275,000 - 106 55 Glen Stewart Drive, Stratford

MLS® #202523095

\$275,000

2 Bedroom, 1.00 Bathroom,
Single Family on 2.25 Acres

Stratford, Stratford, Prince Edward Island

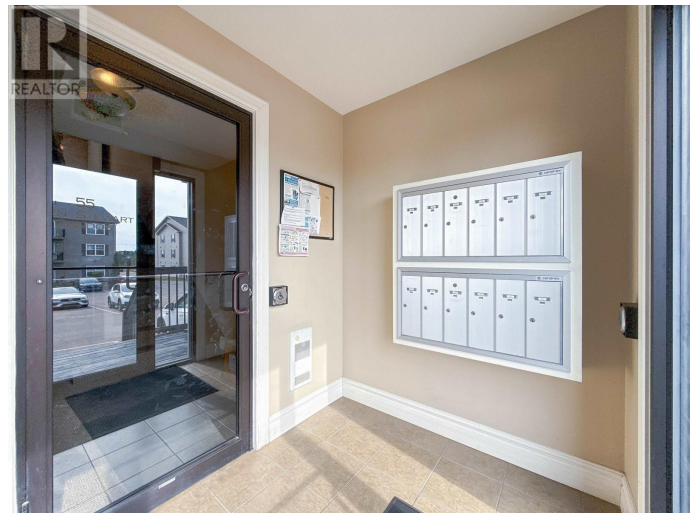
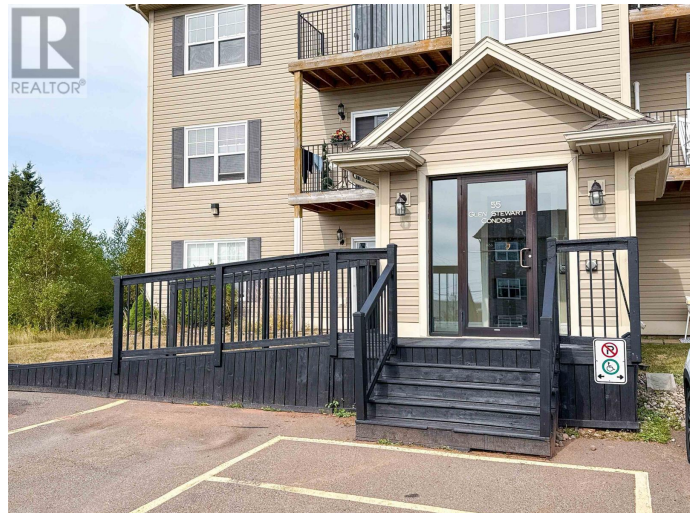
Click the link to view the virtual tour

Discover the perfect blend of comfort and convenience at 106-55 Glen Stewart Drive, a meticulously maintained first-floor condo just minutes from downtown Charlottetown and across from Glen Stewart Primary and Stratford Elementary Schools. This wheelchair-accessible gem features two spacious bedrooms with large double/walk-in closets, a modern bathroom, full in-unit laundry, and an inviting open-concept kitchen and dining area with granite countertops, stainless steel appliances, and a breakfast bar, flowing into a bright living room with modern flooring, neutral decor, and patio doors leading to a private outdoor space. With a dedicated parking spot, ample visitor parking, private basement storage, and a prime location near schools, parks, public transit, and Charlottetown's core, this move-in-ready condo is ideal for families, retirees, or investors, with a \$250/month condo fee covering snow removal, lawn care, exterior maintenance, insurance, and more?schedule your private tour today to experience this charming home! All measurements approximate; buyers should verify. (id:6289)

Built in 2013

Essential Information

Listing #	202523095
Price	\$275,000



Bedrooms	2
Bathrooms	1.00
Acres	2.25
Year Built	2013
Type	Single Family
Sub-Type	Condominium/Strata
Style	Other

Community Information

Address	106 55 Glen Stewart Drive
Subdivision	Stratford
City	Stratford
Province	Prince Edward Island
Postal Code	C1B2A8

Amenities

Amenities	Golf Course, Park, Playground, Public Transit, Shopping
Features	Paved driveway
Parking	Parking Space(s)

Interior

Appliances	Stove, Dishwasher, Dryer, Washer, Microwave, Refrigerator
Heating	Electric Radiator
Cooling	Air exchanger

Exterior

Exterior	Vinyl
Exterior Features	Landscaped
Foundation	Poured Concrete

Listing Details

Listing Office ROYAL LEPAGE PRINCE EDWARD REALTY



The trademarks MLS®, Multiple Listing Service® and the associated logos are owned by The Canadian Real Estate Association (CREA) and identify the quality of services provided by real estate professionals who are members of CREA. REALTOR®. Member of CREA and more.

Listing information last updated on October 26th, 2025 at 5:01pm PDT