

\$83,000 - 0 Mapleridge Estates, New London

MLS® #202518503

\$83,000

0 Bedroom, 0.00 Bathroom,
Vacant Land on 3.00 Acres

New London, New London, Prince Edward Island

Large (3.06 Acres) year round lot tucked in the woods of an upscale subdivision with covenants in place to protect your investment. North Granville is a very sought after area with proximity to the Stanley River network (including Marina), Cavendish, numerous golf courses and picturesque views at every turn. The hard preparation work has been done here with a large area cleared in the woods to start building your private dream home. (id:6289)

Essential Information

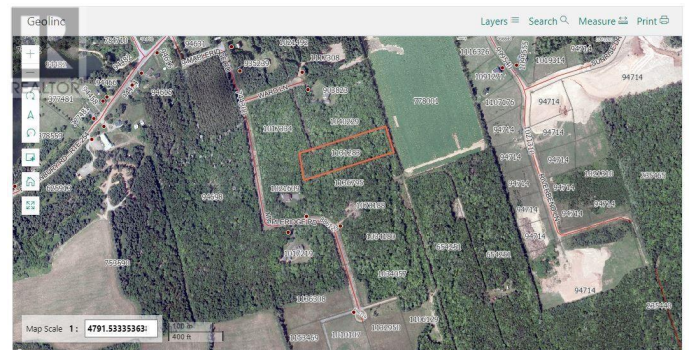
Listing #	202518503
Price	\$83,000
Bathrooms	0.00
Acres	3.00
Type	Vacant Land
Sub-Type	Freehold

Community Information

Address	0 Mapleridge Estates
Subdivision	New London
City	New London
Province	Prince Edward Island
Postal Code	C0B1M0

Amenities

Features	Treed, Partially cleared
----------	--------------------------



Parking

None

Listing Details

Listing Office

CENTURY 21 NORTHUMBERLAND REALTY



The trademarks MLS®, Multiple Listing Service® and the associated logos are owned by The Canadian Real Estate Association (CREA) and identify the quality of services provided by real estate professionals who are members of CREA. REALTOR®. Member of CREA and more.

Listing information last updated on October 13th, 2025 at 10:46am PDT