

\$279,900 - Acreage Glencoe Road, Alberry Plains

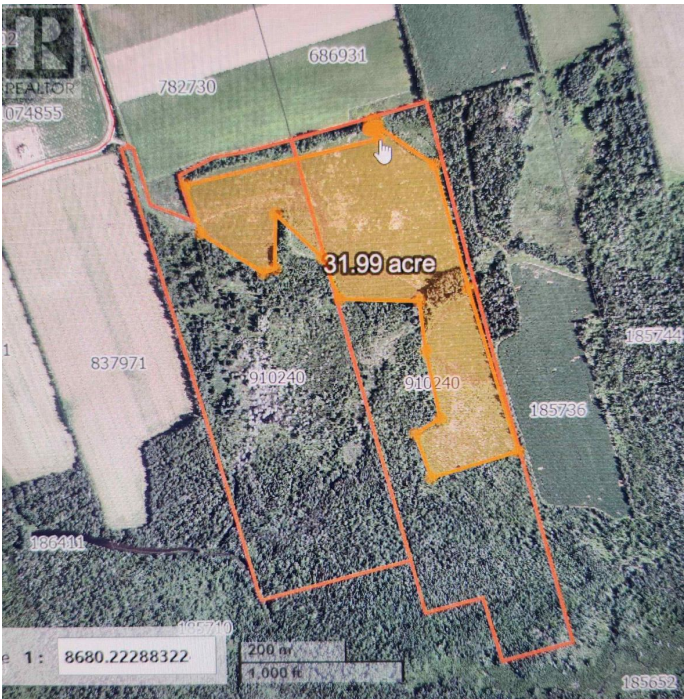
MLS® #202517837

\$279,900

0 Bedroom, 0.00 Bathroom,
Vacant Land on 116.00 Acres

Alberry Plains, Alberry Plains, Prince Edward Island

An exceptional opportunity to own 116 acres of agricultural land with a strong history of blueberry production. Located on a year-round road for convenient access, this property features 32 acres of cleared land?ideal for continued agricultural use, expansion of berry operations, or other crop development. The remaining 84 acres are treed, offering potential for future clearing, recreational use, or as a natural buffer. Whether you're an experienced grower or looking to invest in farmland with proven potential, this parcel offers flexibility, privacy, and excellent road frontage. Don't miss your chance to secure this sizable piece of productive land in a peaceful rural setting. (id:6289)



Essential Information

Listing #	202517837
Price	\$279,900
Bathrooms	0.00
Acres	116.00
Type	Vacant Land
Sub-Type	Freehold

Community Information

Address	Acreage Glencoe Road
Subdivision	Alberry Plains
City	Alberry Plains

Province	Prince Edward Island
Postal Code	C0A1A0

Amenities

Features	Treed, Partially cleared
Parking	None

Listing Details

Listing Office	RE/MAX CHARLOTTETOWN REALTY
----------------	-----------------------------



The trademarks MLS®, Multiple Listing Service® and the associated logos are owned by The Canadian Real Estate Association (CREA) and identify the quality of services provided by real estate professionals who are members of CREA. REALTOR®. Member of CREA and more.

Listing information last updated on October 14th, 2025 at 12:01am PDT