

\$2,500,000 - 1120 Antler Drive, Penticton

MLS® #200584

\$2,500,000

0 Bedroom, 0.00 Bathroom,
Vacant Land on 1.25 Acres

Columbia/Duncan, Penticton, British Columbia

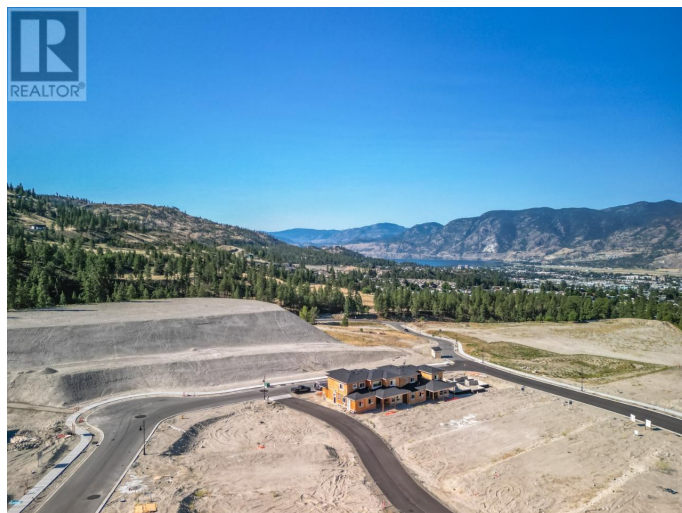
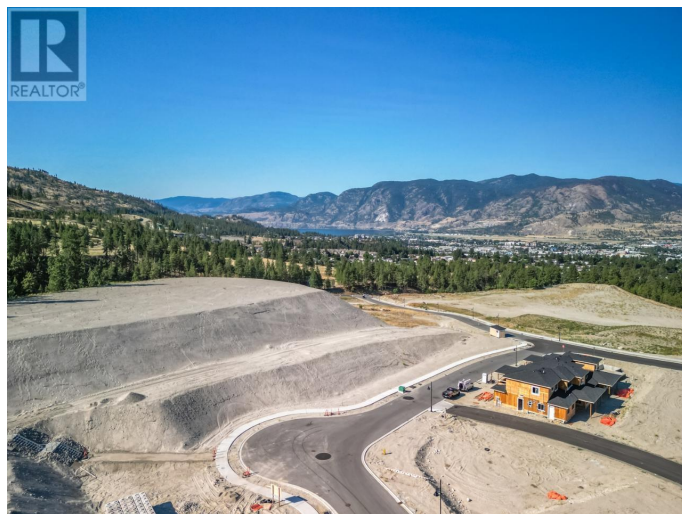
Attention Investors and Developers! Incredible and rare opportunity at The Ridge Penticton to develop this 1.245 acre multi-family RM3 zoned site. Situated in one of Penticton's most sought after new developments nestled among gentle rolling mountains and scenic natural landscape with endless panorama of open skies. Immerse yourself in nature with the countless outdoor adventures available in our beautiful four seasons climate. Penticton's spectacular golf courses, ski hills and miles of warm sandy beaches are just minutes away and an extensive system of forested walking and hiking trails is located directly in your backyard. Create your Dream! Call the Listing Representative today for a detailed package. (id:6289)

Essential Information

Listing #	200584
Price	\$2,500,000
Bathrooms	0.00
Acres	1.25
Type	Vacant Land
Sub-Type	Freehold

Community Information

Address	1120 Antler Drive
Subdivision	Columbia/Duncan
City	Penticton



Province British Columbia
Postal Code V2A0C9

Amenities

Amenities Park, Recreation, Schools
View City view, Mountain view

Additional Information

Zoning Multi-Family

Listing Details

Listing Office RE/MAX Penticton Realty



The trademarks MLS®, Multiple Listing Service® and the associated logos are owned by The Canadian Real Estate Association (CREA) and identify the quality of services provided by real estate professionals who are members of CREA. REALTOR®. Member of CREA and more.

Listing information last updated on October 12th, 2025 at 6:46pm PDT