

# \$729,900 - 800a Country Road, Bay Roberts

MLS® #1291227

**\$729,900**

0 Bedroom, 0.00 Bathroom,  
Vacant Land on 41.64 Acres

N/A, Bay Roberts, Newfoundland & Labrador

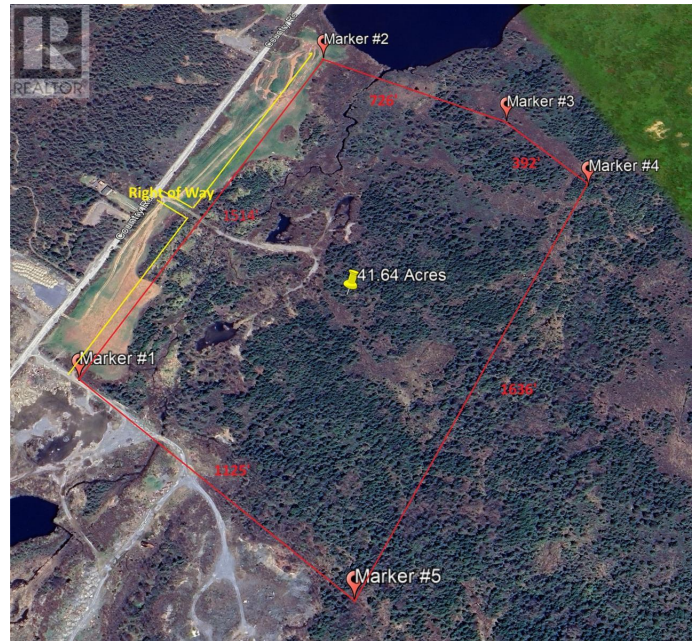
Large section of land containing 41.64 Acres. This parcel of land is located at the head of Country Pond only a couple of Kilometers inland from the Veterans Memorial highway. This parcel of land couple be utilized for many different uses including farming, development for a trailer park, cottage lots or could possibility be developed for a pit. The parcel of land next to this property operated for many years as a gravel pit. The soil conditions are thought to be of good quality, but no exploration work has been done to verify what materials of qualities. The seller wants to sell as one parcel. The land is accessible by country road and then from Country Road to the land there is a 60' right of way to the property and a 60' right away running the full length of the frontage which is over 1500'. (id:6289)

## Essential Information

Listing #	1291227
Price	\$729,900
Bathrooms	0.00
Acres	41.64
Type	Vacant Land
Sub-Type	Freehold

## Community Information

Address	800a Country Road
Subdivision	N/A



City	Bay Roberts
Province	Newfoundland & Labrador
Postal Code	A0A1G0

## Listing Details

Listing Office RE/MAX Eastern Edge Realty Ltd. - Bay Roberts



The trademarks MLS®, Multiple Listing Service® and the associated logos are owned by The Canadian Real Estate Association (CREA) and identify the quality of services provided by real estate professionals who are members of CREA. REALTOR®. Member of CREA and more.

Listing information last updated on October 15th, 2025 at 11:01am PDT