

# \$250,000 - 9 - 22 Bonnell Drive, Pasadena

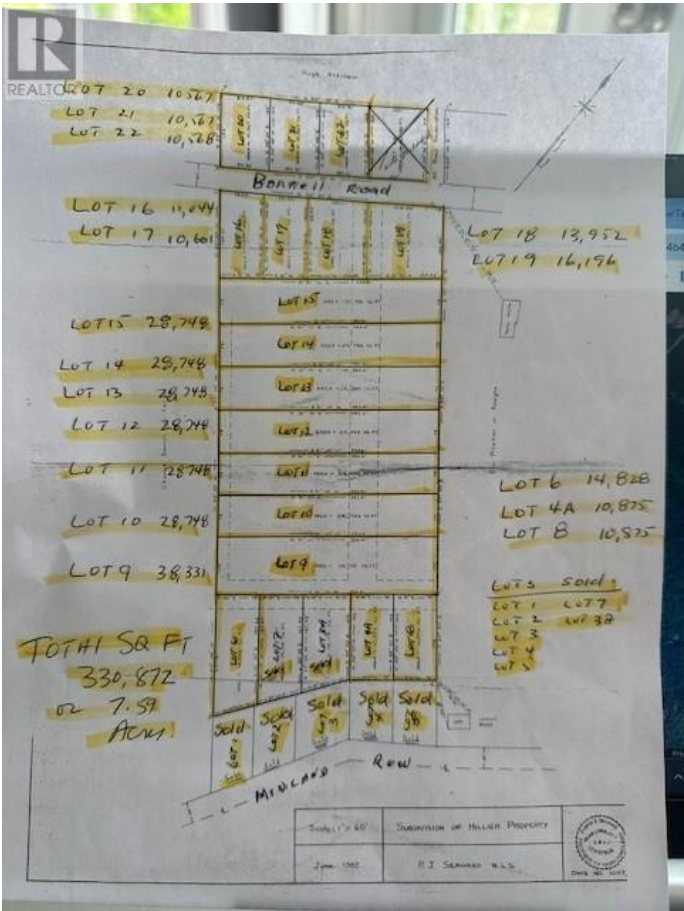
MLS® #1288175

**\$250,000**

0 Bedroom, 0.00 Bathroom,  
Vacant Land on 330.00 Acres

N/A, Pasadena, Newfoundland & Labrador

Residential Land Bundle â€” Plan Build & Grow! This rare offering at Bonnell Drive represents a unique chance to acquire a fully surveyed, multi-lot subdivision in the heart of Pasadena, Newfoundland. Originally designed to divide among family members, this 7.59-acre parcel is now being sold as one complete package, offering exceptional potential for future development, resale, or long-term investment. While municipal services (water/sewer) are not currently connected, giving buyers the freedom to plan according to their vision. This property is ideal for: â€¢Developers and builders looking to launch a residential project. â€¢Families or partners seeking land to share for multi-home living. â€¢Investors who recognize the value in land with zoning, access, and planning already in place. Located between Bonnell Drive, with access to schools, recreation, and the Trans-Canada Highway, this parcel offers the perfect balance of convenience and privacy. Now is your opportunity to secure an entire surveyed subdivisionâ€”ready for your vision. (id:6289)



## Essential Information

Listings #	1288175
Price	\$250,000
Bathrooms	0.00
Acres	330.00

Type Vacant Land

## Community Information

Address 9 - 22 Bonnell Drive  
Subdivision N/A  
City Pasadena  
Province Newfoundland & Labrador  
Postal Code A0L1B0

## Listing Details

Listing Office Royal LePage Property Consultants Limited



The trademarks MLS®, Multiple Listing Service® and the associated logos are owned by The Canadian Real Estate Association (CREA) and identify the quality of services provided by real estate professionals who are members of CREA. REALTOR®. Member of CREA and more.

Listing information last updated on October 15th, 2025 at 7:32am PDT