

\$289,900 - Lot 4 Spruceland Drive, Clarenville

MLS® #1287251

\$289,900

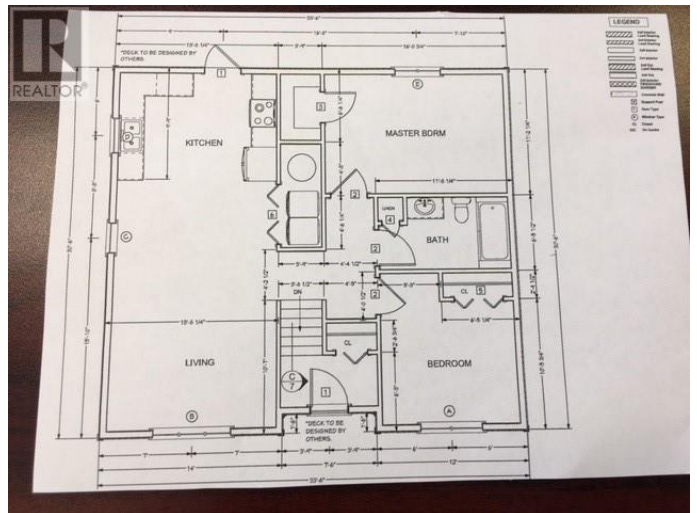
2 Bedroom, 1.00 Bathroom, 2,022 sqft

Single Family on 7.00 Acres

N/A, Clarenville, Newfoundland & Labrador

Affordable turn key home located on a quiet street in the Shoal Harbour valley! This 2 bedroom 1 bath property is in one of Clarenville's newest developments on Spruceland drive. This turn key home has an open concept design and is within a couple minutes walk of the school, playgrounds and many different types of recreation. Property will be built by Sein construction whose reputation for high quality work and attention to detail will be sure to please any buyer. Builder offers a 7 year Atlantic home warranty, generous allowances and can change any plan to suit. (id:6289)

Built in 2025



Essential Information

Listing #	1287251
Price	\$289,900
Bedrooms	2
Bathrooms	1.00
Square Footage	2,022
Acres	7.00
Year Built	2025
Type	Single Family
Sub-Type	Freehold
Style	Bungalow

Community Information

Address Lot 4 Spruceland Drive

Subdivision	N/A
City	Clareville
Province	Newfoundland & Labrador
Postal Code	A5A4N8

Amenities

Amenities	Recreation
-----------	------------

Interior

Heating	Electric Baseboard heaters
# of Stories	1

Exterior

Exterior	Vinyl siding
Foundation	Concrete

Listing Details

Listing Office	RE/MAX Eastern Edge Realty Ltd. Clareville
----------------	--



The trademarks MLS®, Multiple Listing Service® and the associated logos are owned by The Canadian Real Estate Association (CREA) and identify the quality of services provided by real estate professionals who are members of CREA. REALTOR®. Member of CREA and more.

Listing information last updated on October 14th, 2025 at 3:16pm PDT