

\$799,900 - 57 Pepperwood Drive, St.johns

MLS® #1281614

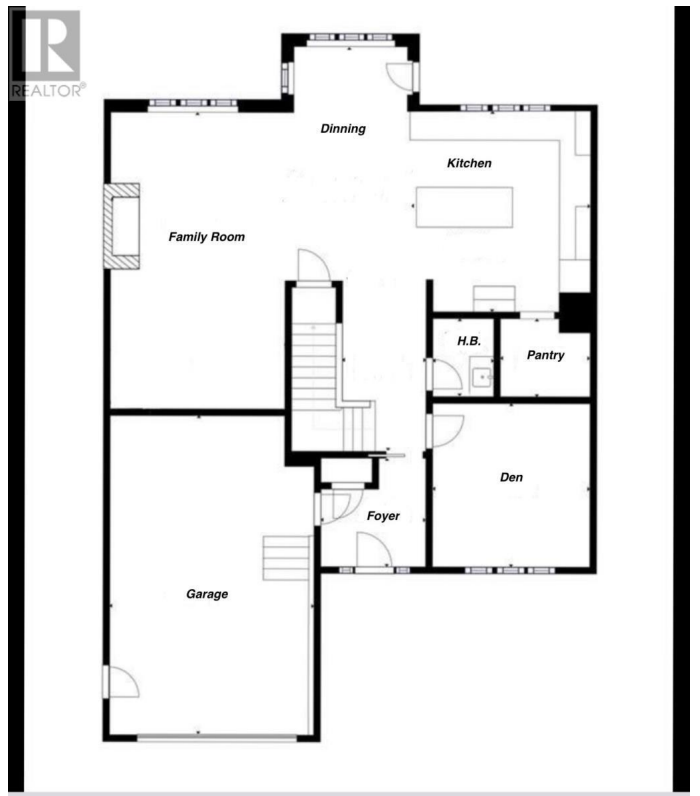
\$799,900

4 Bedroom, 3.00 Bathroom, 3,611 sqft

Single Family on 0.00 Acres

N/A, St.johns, Newfoundland & Labrador

57 Pepperwood Drive is a two story home situated on a large oversized lot in Southlands. This beautifully designed home boasts an open concept on the main level, allowing for a seamless flow between the living, dining, and kitchen areas. Large windows throughout flood the space with natural light, creating a bright and inviting atmosphere. A designated office or study room offers a quiet space for work or relaxation. The living room is a standout feature, with its stunning coffered ceiling, adding a touch of elegance to the space. The stairs leading to the second floor are complemented by an eye-catching accent wall, enhancing the home's style. For year-round comfort, mini-split systems are installed for efficient heating and cooling throughout. Upstairs, you'll find four spacious bedrooms, including a luxurious master suite. The master bedroom is generously sized, offering ample space for relaxation, and it connects to an expansive ensuite bathroom, providing a spa-like experience with premium fixtures and finishes. Fully landscaped with nursery sods. Some of the standard features include Low E argon gas windows, R50 insulation in attic, R25 walls including a 1" SM under siding and 35 year shingles, basement exterior walls insulated. Kitchen will be complete with appliances. HST included in purchase price (id:6289)



Built in 2024

Essential Information

Listing #	1281614
Price	\$799,900
Bedrooms	4
Bathrooms	3.00
Half Baths	1
Square Footage	3,611
Acres	0.00
Year Built	2024
Type	Single Family
Sub-Type	Freehold
Style	2 Level

Community Information

Address	57 Pepperwood Drive
Subdivision	N/A
City	St.johns
Province	Newfoundland & Labrador
Postal Code	A1H0L2

Amenities

Amenities	Shopping
Parking	Attached Garage
# of Garages	1

Interior

Heating	Electric Baseboard heaters, Mini-Split
Cooling	Air exchanger
Fireplace	Yes
# of Stories	2

Exterior

Exterior	Wood shingles, Stone, Vinyl siding
Exterior Features	Landscaped
Lot Description	85x98x33x138 4,051 - 7,250 sqft
Foundation	Concrete

Listing Details

Listing Office	RE/MAX Realty Specialists
----------------	---------------------------



The trademarks MLS®, Multiple Listing Service® and the associated logos are owned by The Canadian Real Estate Association (CREA) and identify the quality of services provided by real estate professionals who are members of CREA. REALTOR®. Member of CREA and more.

Listing information last updated on October 15th, 2025 at 2:46pm PDT