

\$24,900 - 131 Route 450, Halfway Point

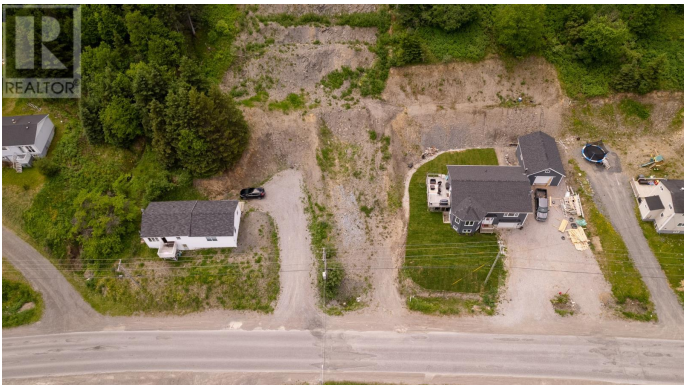
MLS® #1243529

\$24,900

0 Bedroom, 0.00 Bathroom,
Vacant Land on 0.43 Acres

N/A, Halfway Point, Newfoundland & Labrador

Nestled along Route 450 in the picturesque community of Halfway Point, this vacant lot offers breathtaking views of the Bay of Islands, making it a prime opportunity for your dream home or as an investment. The sloping terrain provides endless possibilities for creative design, including the convenience of a walk-out basement. Enjoy natural light flooding every level of your future home while taking in the spectacular, unobstructed views. Donâ€™t miss the chance to own this exceptional piece of property in an idyllic location! (id:6289)



Essential Information

Listing #	1243529
Price	\$24,900
Bathrooms	0.00
Acres	0.43
Type	Vacant Land
Sub-Type	Freehold

Community Information

Address	131 Route 450
Subdivision	N/A
City	Halfway Point
Province	Newfoundland & Labrador
Postal Code	A0L1A0

Amenities

View	View
------	------

Listing Details

Listing Office RE/MAX Realty Professionals Ltd. - Corner Brook



The trademarks MLS®, Multiple Listing Service® and the associated logos are owned by The Canadian Real Estate Association (CREA) and identify the quality of services provided by real estate professionals who are members of CREA. REALTOR®. Member of CREA and more.

Listing information last updated on October 15th, 2025 at 12:01pm PDT