

\$1,680,000 - 1960 Aspen Crescent, Revelstoke

MLS® #10364358

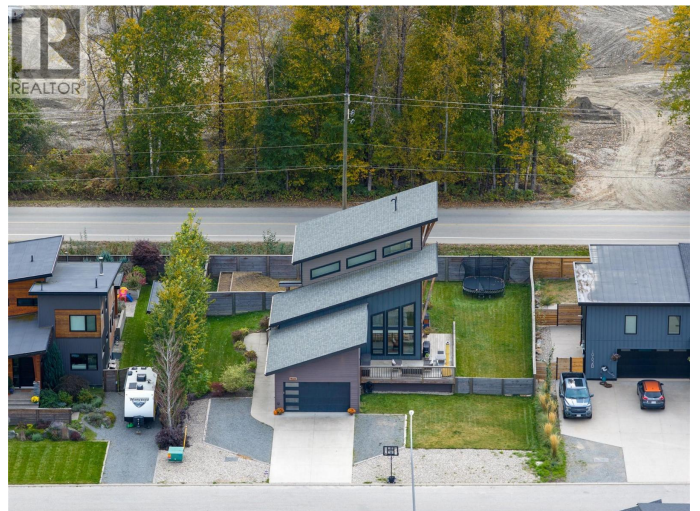
\$1,680,000

5 Bedroom, 3.00 Bathroom, 3,254 sqft

Single Family on 0.23 Acres

Revelstoke, Revelstoke, British Columbia

Welcome to your dream property in one of Revelstoke's most sought-after neighbourhoods—just steps from Mackenzie Village, world-class trails, directly across from the brand-new Cabot golf course, and only minutes from the Resort! With its modern design, floor-to-ceiling windows, and quartz countertops throughout, this home is filled with natural light and perfectly positioned to capture breathtaking mountain and golf course views. The bright, open main living area is built for entertaining, featuring sliding doors that open to a 400 sq. ft. deck—perfect for hosting or relaxing amid stunning alpine scenery. The primary suite offers its own private deck overlooking the fairways, complete with a walk-in closet and spa-inspired ensuite with direct views of the course and upper gondola. Every detail has been thoughtfully considered. The custom kitchen with quartz counters anchors the space, while heated tile floors run throughout for year-round comfort. Expansive windows highlight the home's clean design and beautiful finishes. Outside, enjoy a fully fenced yard with two large gates for easy flow and access. The two-car garage offers year-round convenience, and the spacious driveway provides ample parking for vehicles and guests. An irrigation system keeps the yard and garden boxes lush and low-maintenance. Downstairs, a separate entrance leads to a bright, flexible basement with suite potential already roughed in—plumbing, framing, and kitchen layout



ready to go. Perfect for a guest suite, short-term rental, or additional family living. Whether you’re looking for a luxurious full-time residence, a mountain retreat, or an investment opportunity, this home truly delivers on location, lifestyle, and value”all in one. (id:6289)

Built in 2017

Essential Information

Listing #	10364358
Price	\$1,680,000
Bedrooms	5
Bathrooms	3.00
Square Footage	3,254
Acres	0.23
Year Built	2017
Type	Single Family
Sub-Type	Freehold
Style	Contemporary

Community Information

Address	1960 Aspen Crescent
Subdivision	Revelstoke
City	Revelstoke
Province	British Columbia
Postal Code	V0E2S1

Amenities

Amenities	Recreation, Schools, Ski area
Features	Cul-de-sac, Level lot, Central island, Two Balconies
Parking Spaces	6
Parking	Attached Garage
# of Garages	2
View	Mountain view

Interior

Heating	In Floor Heating, See remarks
---------	-------------------------------

Cooling	Heat Pump
# of Stories	2

Exterior

Exterior	Aluminum, Cedar Siding, Other
Exterior Features	Level
Roof	Asphalt shingle
Foundation	Insulated Concrete Forms

Additional Information

Zoning	See Remarks
--------	-------------

Listing Details

Listing Office	RE/MAX Revelstoke Realty
----------------	--------------------------



The trademarks MLS®, Multiple Listing Service® and the associated logos are owned by The Canadian Real Estate Association (CREA) and identify the quality of services provided by real estate professionals who are members of CREA. REALTOR®. Member of CREA and more.

Listing information last updated on October 13th, 2025 at 1:31am PDT