

\$329,000 - 2557 Kettle Ridge Way, Naramata

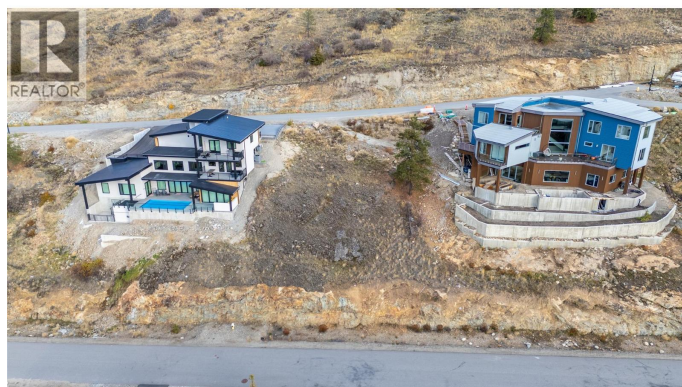
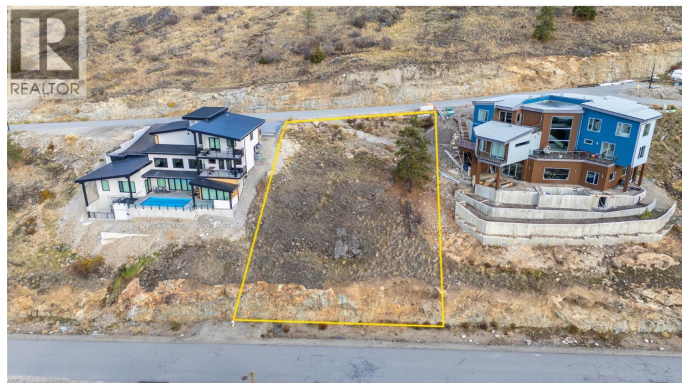
MLS® #10362799

\$329,000

0 Bedroom, 0.00 Bathroom,
Vacant Land on 0.26 Acres

Naramata Rural, Naramata, British Columbia

Build your dream home in Kettle Ridge, right in the heart of the Naramata Bench. This west-facing lot offers incredible lake views and stunning sunsets. Fully serviced and ready to go, it comes with building schemes in place to protect your investment. With direct access to the Kettle Valley Trail, outdoor adventure is right at your doorstep. Just a short drive to Penticton, youâ€™re close to wineries, restaurants, and everything you need. GST is included in the price, and all measurements are approximate. Donâ€™t miss this incredible opportunity to own a piece of the sought-after Naramata Bench! (id:6289)



Essential Information

Listing #	10362799
Price	\$329,000
Bathrooms	0.00
Acres	0.26
Type	Vacant Land
Sub-Type	Freehold

Community Information

Address	2557 Kettle Ridge Way
Subdivision	Naramata Rural
City	Naramata
Province	British Columbia
Postal Code	V0H1N1

Amenities



Amenities	Recreation
Utilities	Cable, Electricity, Natural Gas, Telephone, Water
Features	Sloping
View	Lake view, Mountain view, Valley view, View (panoramic)

Exterior

Exterior Features Sloping

Additional Information

Zoning Unknown

Listing Details

Listing Office Chamberlain Property Group



The trademarks MLS®, Multiple Listing Service® and the associated logos are owned by The Canadian Real Estate Association (CREA) and identify the quality of services provided by real estate professionals who are members of CREA. REALTOR®. Member of CREA and more.

Listing information last updated on October 14th, 2025 at 11:46pm PDT