

\$3,600,000 - 2626 Airport Way, Revelstoke

MLS® #10362336

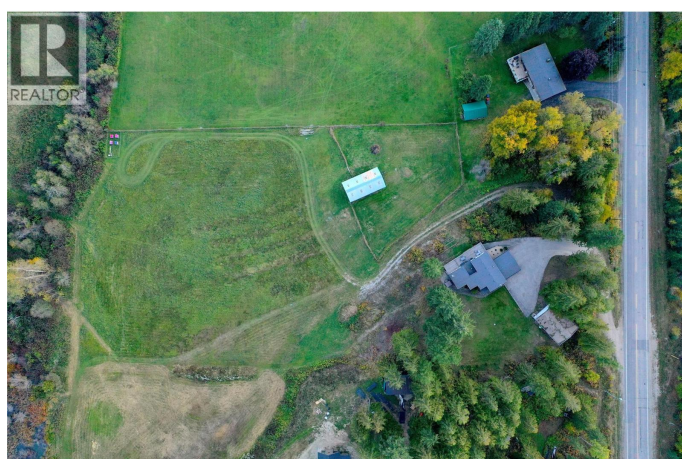
\$3,600,000

5 Bedroom, 4.00 Bathroom, 2,895 sqft

Single Family on 4.44 Acres

Revelstoke, Revelstoke, British Columbia

Set on 4.4 private acres just five minutes from downtown Revelstoke, this property offers the rare combination of privacy, space, and proximity to everything that defines mountain living. Steps from Williamson Lake and bordering the new Cabot Revelstoke Golf Course, the property enjoys a southern orientation - providing direct sight-lines to Revelstoke Mountain Resort's 'Revelation' gondola and Mid-Mountain Lodge. A pastoral foreground is framed by towering Mt Cartier to the south, while expansive views of Mount Begbie and the Monashee Mountains are gained from the eastern side of the acreage. Zoned ""Small Holdings"" within the Columbia Shuswap Regional District, the property's rural character and exclusivity are protected as the rest of Revelstoke continues to grow and densify. At the heart of the property is a custom five-bedroom home oriented to maximize natural light throughout the day. Vaulted ceilings and oversized windows in the living and dining rooms provide the perfect mountain backdrop for entertaining or relaxing, while a self-contained in-law suite adds flexibility for extended family or long-term guests. The 30' x 40' heated shop with power and heat provides secure space for the toys while a barn adds additional capacity for animals or storage use. Acreages of this size, in this location, seldom come to market. This property represents a rare opportunity to own a signature piece of Revelstoke. (id:6289)



Built in 1984

Essential Information

Listing #	10362336
Price	\$3,600,000
Bedrooms	5
Bathrooms	4.00
Half Baths	1
Square Footage	2,895
Acres	4.44
Year Built	1984
Type	Single Family
Sub-Type	Freehold
Style	Split level entry

Community Information

Address	2626 Airport Way
Subdivision	Revelstoke
City	Revelstoke
Province	British Columbia
Postal Code	V0E2S3

Amenities

Amenities	Golf Nearby, Airport, Recreation, Schools, Shopping, Ski area
Utilities	Cable, Electricity, Telephone
Features	Private setting
Parking Spaces	11
Parking	Detached Garage
# of Garages	4
View	Lake view, Mountain view, Valley view

Interior

Appliances	Refrigerator, Dishwasher, Dryer, Range - Electric, Microwave, See remarks, Washer
Heating	Geo Thermal Forced air
Cooling	See Remarks
Fireplace	Yes
# of Fireplaces	1
# of Stories	3

Exterior

Exterior	Stucco
Roof	Other

Additional Information

Zoning	Unknown
--------	---------

Listing Details

Listing Office	Royal LePage Revelstoke
----------------	-------------------------



The trademarks MLS®, Multiple Listing Service® and the associated logos are owned by The Canadian Real Estate Association (CREA) and identify the quality of services provided by real estate professionals who are members of CREA. REALTOR®. Member of CREA and more.

Listing information last updated on October 12th, 2025 at 1:46pm PDT