

\$2,360,184 - 1413 Cherry Crescent, Kelowna

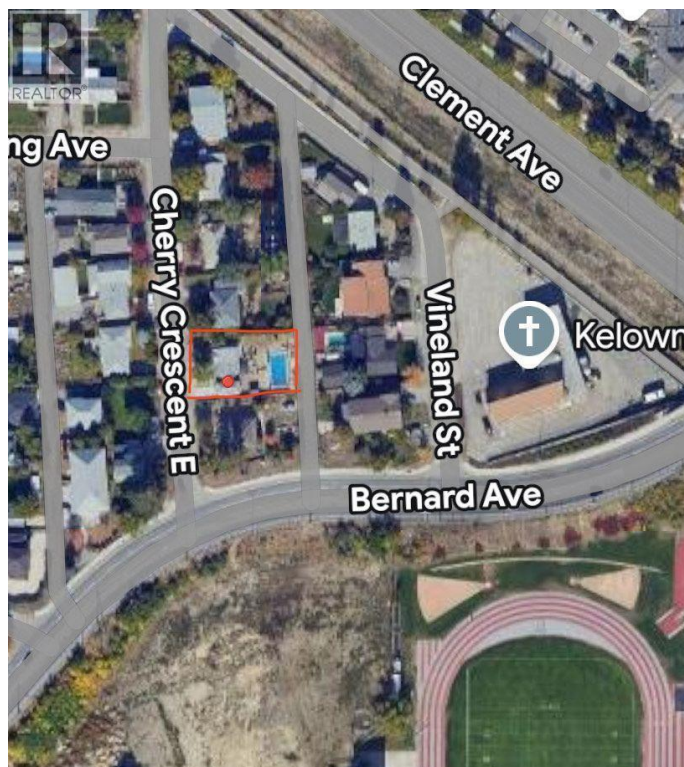
MLS® #10362174

\$2,360,184

3 Bedroom, 1.00 Bathroom, 2,304 sqft
Single Family on 0.21 Acres

Glenmore, Kelowna, British Columbia

Prime development opportunity in the heart of Kelowna's urban core! Situated along the Bernard Avenue Transit Supportive Corridor (TSC), this property offers exceptional potential for apartment development under current zoning guidelines. Just steps from the highly anticipated new Parkinson Recreation Centre and minutes to downtown, this site is ideally located in a rapidly evolving, transit-oriented area within the Glenmore neighbourhood. The flat lot and central location make it a strong candidate for multi-unit residential, apartment, or mixed-use development. (id:6289)



Built in 1963

Essential Information

Listing #	10362174
Price	\$2,360,184
Bedrooms	3
Bathrooms	1.00
Square Footage	2,304
Acres	0.21
Year Built	1963
Type	Single Family
Sub-Type	Freehold

Community Information

Address	1413 Cherry Crescent
Subdivision	Glenmore

City	Kelowna
Province	British Columbia
Postal Code	V1Y3Y2

Amenities

Utilities	Electricity, Sewer, Water
Parking Spaces	2
Parking	Attached Garage
# of Garages	2

Interior

Heating	No heat
# of Stories	2

Additional Information

Zoning	Residential
--------	-------------

Listing Details

Listing Office	eXp Realty of Canada, Inc.
----------------	----------------------------



The trademarks MLS®, Multiple Listing Service® and the associated logos are owned by The Canadian Real Estate Association (CREA) and identify the quality of services provided by real estate professionals who are members of CREA. REALTOR®. Member of CREA and more.

Listing information last updated on October 14th, 2025 at 12:01pm PDT