

\$475,000 - 217 Elm Avenue Unit# 209, Penticton

MLS® #10361296

\$475,000

2 Bedroom, 2.00 Bathroom, 1,259 sqft

Single Family on 1.00 Acres

Main South, Penticton, British Columbia

Adventure Awaits, Just 50 Steps to Skaha Lake! Welcome to South Okanagan living in this brand-new, never-lived-in 2-bed, 2-bath condo at Clarence House. Perfectly positioned on the sought-after northwest side, this 1,259 sq. ft. home blends modern style with everyday comfort. Inside, you'll find quartz countertops, luxury plank flooring, tiled bathrooms, and a spa-inspired ensuite with a walk-in shower. The open-concept kitchen shines with stainless steel appliances and custom window coverings, while an upgraded HVAC + ERV system keeps the air fresh and the temperature just right, year-round. But the real magic? Adventure and relaxation just across the street. Start your mornings with coffee by the beach, paddle out on the lake, or explore nearby parks—your lifestyle upgrade is truly steps away. This move-in-ready home comes with reasonable pet restrictions and, best of all, Sellers will pay GST Don't miss your chance to own new construction in one of Penticton's most desirable neighborhoods, where every day feels like a vacation. (id:6289)

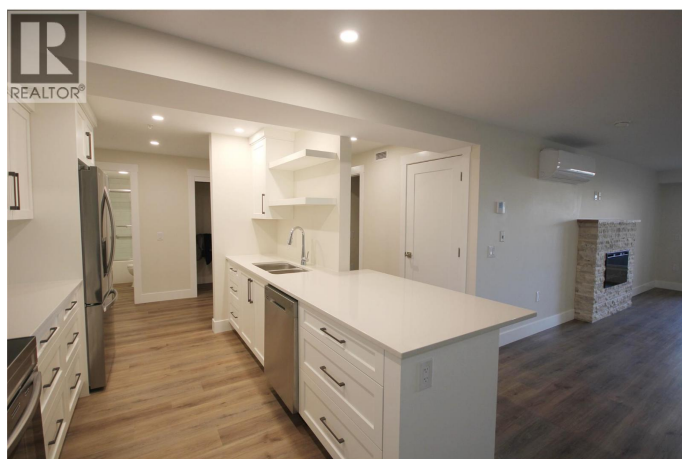
Built in 2022

Essential Information

Listing # 10361296

Price \$475,000

Bedrooms 2



Bathrooms	2.00
Square Footage	1,259
Acres	1.00
Year Built	2022
Type	Single Family
Sub-Type	Strata
Style	Ranch

Community Information

Address	217 Elm Avenue Unit# 209
Subdivision	Main South
City	Penticton
Province	British Columbia
Postal Code	V2A3W1

Amenities

Amenities	Airport, Park, Recreation, Schools, Shopping
Utilities	Cable, Electricity, Natural Gas, Telephone, Sewer, Water
Features	Level lot, Central island, One Balcony
Parking Spaces	1
Parking	Attached Garage, Parkade, Stall
# of Garages	1
View	Mountain view, View (panoramic)
Is Waterfront	Yes
Waterfront	Waterfront on lake

Interior

Appliances	Range, Refrigerator, Dishwasher, Microwave, Washer/Dryer Stack-Up
Heating	Heat Pump
Cooling	Wall unit
Fireplace	Yes
# of Fireplaces	1
Fireplaces	Electric
# of Stories	1

Exterior

Exterior	Other
Exterior Features	Level
Roof	Tar & gravel

Additional Information

Zoning Unknown

Listing Details

Listing Office RE/MAX Penticton Realty



The trademarks MLS®, Multiple Listing Service® and the associated logos are owned by The Canadian Real Estate Association (CREA) and identify the quality of services provided by real estate professionals who are members of CREA. REALTOR®. Member of CREA and more.

Listing information last updated on October 13th, 2025 at 8:01pm PDT