

\$999,000 - 2440 Wiltse Drive, Penticton

MLS® #10361092

\$999,000

4 Bedroom, 4.00 Bathroom, 2,739 sqft

Single Family on 0.21 Acres

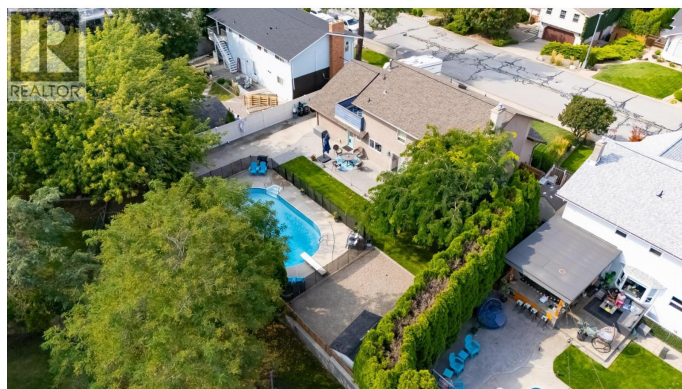
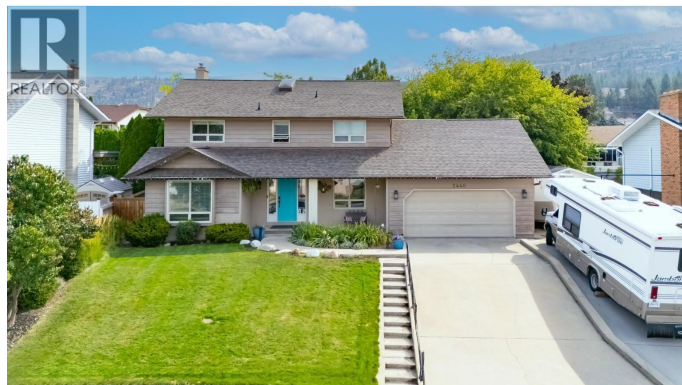
Wiltse/Valleyview, Penticton, British Columbia

Welcome to this spacious and well-designed 4 bedroom + office, 4-bathroom family home nestled in one of Penticton's most desirable areas. Set on a 0.20-acre lot with a flat back yard, this home offers the perfect blend of functionality and lifestyle. The open-concept layout is ideal for both everyday living and entertaining, featuring a bright and inviting living space that flows effortlessly into the updated kitchen and dining area. Enjoy the comfort of an updated ensuite in the primary suite, as well as the convenience of upstairs laundry. Step outside to your private backyard oasis complete with an in-ground pool with safety fencing, perfect for summer fun! There's plenty of room for toys too—with a large garage, extra storage, and space for your RV or boat. Located within walking distance to Wiltse Elementary School and beautiful hiking trails, this home is perfect for active families. Don't miss your chance to own in one of Penticton's premier neighbourhoods! (id:6289)

Built in 1985

Essential Information

Listing #	10361092
Price	\$999,000
Bedrooms	4
Bathrooms	4.00
Half Baths	1



Square Footage	2,739
Acres	0.21
Year Built	1985
Type	Single Family
Sub-Type	Freehold
Style	Other

Community Information

Address	2440 Wiltse Drive
Subdivision	Wiltse/Valleyview
City	Penticton
Province	British Columbia
Postal Code	V2A7Y9

Amenities

Amenities	Airport, Recreation, Schools, Shopping
Parking Spaces	2
Parking	Attached Garage
# of Garages	2
Has Pool	Yes
Pool	Inground pool

Interior

Appliances	Refrigerator, Dishwasher, Dryer, Range - Electric, Microwave, Washer
Heating	Forced air
Cooling	Heat Pump
Fireplace	Yes
# of Fireplaces	1
Fireplaces	Wood
# of Stories	3

Exterior

Exterior	Stucco, Wood siding
Exterior Features	Landscaped, Underground sprinkler
Roof	Asphalt shingle

Additional Information

Zoning	Residential
--------	-------------

Listing Details

Listing Office

RE/MAX Orchard Country



The trademarks MLS®, Multiple Listing Service® and the associated logos are owned by The Canadian Real Estate Association (CREA) and identify the quality of services provided by real estate professionals who are members of CREA. REALTOR®. Member of CREA and more.

Listing information last updated on October 12th, 2025 at 11:46pm PDT