

\$2,250,000 - 1190 Raymer Avenue, Kelowna

MLS® #10360225

\$2,250,000

7 Bedroom, 2.00 Bathroom, 3,170 sqft

Single Family on 0.48 Acres

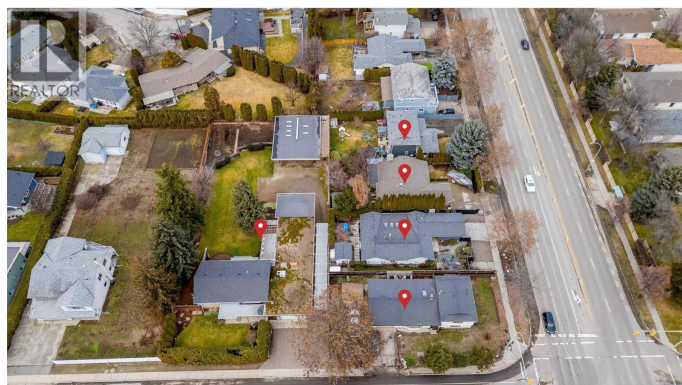
Kelowna South, Kelowna, British Columbia

LAND ASSEMBLY! PRIME LOCATION! This 5-lot assembly is located on the corner of Gordon and Raymer, 1 ACRE+, and there is potential for constructing a 6-story residential building with commercial on the ground level, under MF3 Zoning. This assembly's highly desirable location, strategic position on a transit corridor, and its accessibility to key amenities, mark it as a premium development prospect! City indicates 1.8 FAR + bonuses up to 2.3 FAR. This property is contingent on being sold together with 1190 Raymer Avenue MLS®#10360225, 1198 Raymer Avenue MLS®#10360220, 2690 Gordon Drive MLS®#10360211, 2680 Gordon Drive MLS®#10360203, and 2670 Gordon Drive MLS®#10360134. There are currently no permits or registration of the development. (id:6289)

Built in 1966

Essential Information

Listing #	10360225
Price	\$2,250,000
Bedrooms	7
Bathrooms	2.00
Square Footage	3,170
Acres	0.48
Year Built	1966
Type	Single Family



Sub-Type	Freehold
Style	Other

Community Information

Address	1190 Raymer Avenue
Subdivision	Kelowna South
City	Kelowna
Province	British Columbia
Postal Code	V1Y5A1

Amenities

Amenities	Public Transit, Park, Recreation, Schools, Shopping
Parking Spaces	2
Parking	Attached Garage
# of Garages	2

Interior

Heating	Other
Cooling	See Remarks
# of Stories	2

Additional Information

Zoning	Unknown
--------	---------

Listing Details

Listing Office	Royal LePage Kelowna Paquette Realty
----------------	--------------------------------------



The trademarks MLS®, Multiple Listing Service® and the associated logos are owned by The Canadian Real Estate Association (CREA) and identify the quality of services provided by real estate professionals who are members of CREA. REALTOR®. Member of CREA and more.

Listing information last updated on October 13th, 2025 at 5:46am PDT