

\$975,000 - 2956 Evergreen Drive, Penticton

MLS® #10357671

\$975,000

6 Bedroom, 3.00 Bathroom, 2,969 sqft

Single Family on 0.16 Acres

Wiltse/Valleyview, Penticton, British Columbia

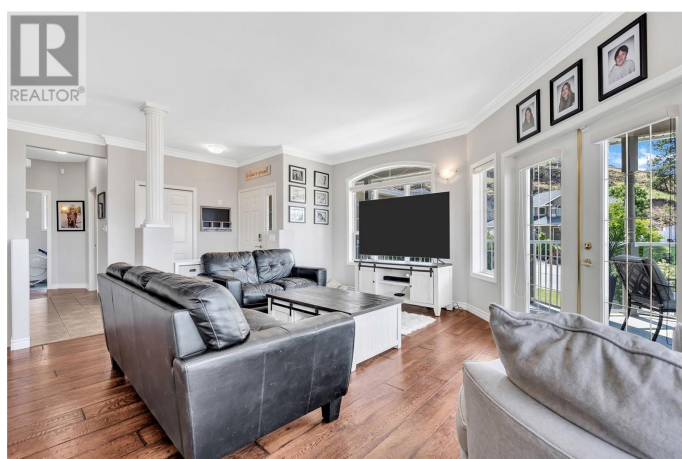
Welcome to your dream home! This stunning 6-bedroom, 3-bathroom custom rancher with a walkout basement is designed with families in mind. Located on a fully fenced, landscaped, and irrigated lot, it offers plenty of space for kids and pets to play safely while parents enjoy peace of mind. Inside, the bright open-concept layout makes everyday living easy. The kitchen is the heart of the home, featuring quartz counters, stainless steel appliances, a large island for family breakfasts, and direct access to the expansive covered wraparound deck—perfect for BBQ dinners and family gatherings. The main level includes a spacious master bedroom with walk-in closet, ensuite, and deck access for a quiet retreat. Downstairs has recently seen new carpet, three large bedrooms, and a huge rec room providing the ideal hangout for kids, teens, or family movie nights. With new A/C, a new furnace, a double garage, and RV parking, this home has all the practical updates covered too. Whether it's hosting birthday parties, relaxing summer evenings on the deck, or giving your family the room to grow, this Evergreen Drive home truly has it all. (id:6289)

Built in 2001

Essential Information

Listing # 10357671

Price \$975,000



Bedrooms	6
Bathrooms	3.00
Square Footage	2,969
Acres	0.16
Year Built	2001
Type	Single Family
Sub-Type	Freehold
Style	Ranch

Community Information

Address	2956 Evergreen Drive
Subdivision	Wiltse/Valleyview
City	Penticton
Province	British Columbia
Postal Code	V2A9A8

Amenities

Amenities	Public Transit, Park, Schools
Features	Level lot, Balcony
Parking Spaces	5
Parking	Attached Garage
# of Garages	2
View	City view, Mountain view

Interior

Appliances	Refrigerator, Dishwasher, Range - Electric, Washer & Dryer
Heating	Forced air, See remarks
Cooling	Central air conditioning
Fireplace	Yes
# of Fireplaces	1
# of Stories	2

Exterior

Exterior	Stucco
Exterior Features	Landscaped, Level
Roof	Asphalt shingle

Additional Information

Zoning	Residential
--------	-------------

Listing Details

Listing Office Royal LePage Locations West



The trademarks MLS®, Multiple Listing Service® and the associated logos are owned by The Canadian Real Estate Association (CREA) and identify the quality of services provided by real estate professionals who are members of CREA. REALTOR®. Member of CREA and more.

Listing information last updated on October 13th, 2025 at 5:46am PDT