

\$268,500 - 1170 Brookside Avenue Unit# 204, Kelowna

MLS® #10357128

\$268,500

2 Bedroom, 2.00 Bathroom, 1,062 sqft

Single Family on 1.00 Acres

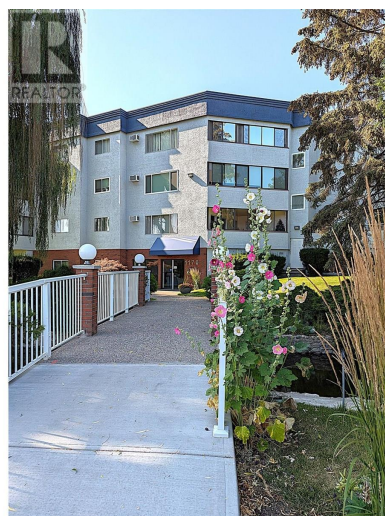
Springfield/Spall, Kelowna, British Columbia

Experience a quiet but convenient lifestyle at Woodbridge Place. The building is in a cul-de-sac, next to Mill Creek with mature landscaping around the property. Located close to the hospital, parks, shopping, professional services, downtown and easy access to bus routes enables all your life activities. 2 beds 2 baths and an enclosed extended living space where you can enjoy a morning coffee to start your day or an evening wine to end your day. Primary bedroom has 3 piece ensuite and a walk in closet. Laminate and tile floors throughout for easy maintenance. In suite laundry, storage room and additional same level storage room for your convenience. This is a clean, well maintained and managed building for the easy lifestyle you are seeking. Large amenities room with a deck for entertaining guests and meeting up with your new neighbours, many are long term residents. One secured underground parking spot with tire storage, a hobby shop and bike locker to complete this residence. Call today for more information. (id:6289)

Built in 1987

Essential Information

Listing #	10357128
Price	\$268,500
Bedrooms	2



Bathrooms	2.00
Square Footage	1,062
Acres	1.00
Year Built	1987
Type	Single Family
Sub-Type	Strata
Style	Other

Community Information

Address	1170 Brookside Avenue Unit# 204
Subdivision	Springfield/Spall
City	Kelowna
Province	British Columbia
Postal Code	V1Y5T4

Amenities

Parking Spaces	1
Parking	Underground
Is Waterfront	Yes
Waterfront	Waterfront on creek

Interior

Appliances	Refrigerator, Dishwasher, Oven - Electric, Washer & Dryer
Heating	Baseboard heaters
Cooling	Wall unit
# of Stories	1

Additional Information

Zoning	Unknown
--------	---------

Listing Details

Listing Office	Royal LePage Locations West
----------------	-----------------------------



The trademarks MLS®, Multiple Listing Service® and the associated logos are owned by The Canadian Real Estate Association (CREA) and identify the quality of services provided by real estate professionals who are members of CREA. REALTOR®. Member of CREA and more.

Listing information last updated on October 13th, 2025 at 5:31am PDT