

# \$575,000 - 300 Creekview Road Unit# 2, Penticton

MLS® #10356767

**\$575,000**

3 Bedroom, 3.00 Bathroom, 1,193 sqft

Single Family on 1.00 Acres

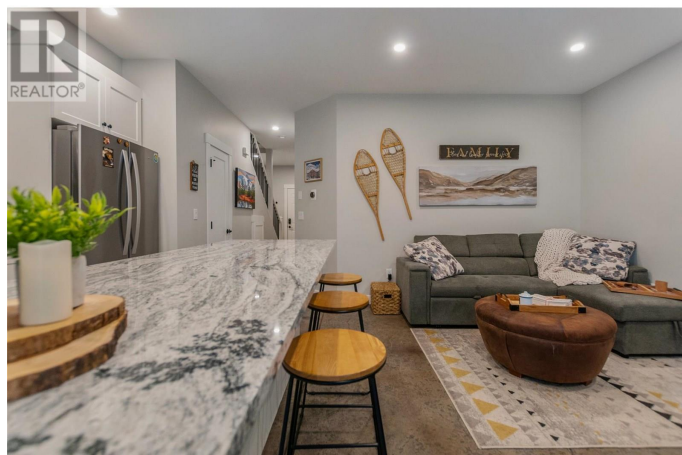
Penticton Apex, Penticton, British Columbia

Experience the ultimate in mountain living with this exceptional townhome, perfectly situated on the Grandfather Trail at Apex Mountain. Just a 5-minute walk from the village, this home offers the perfect blend of convenience, comfort, and modern design, making it an ideal choice for skiers and outdoor enthusiasts. This beautifully crafted home features three spacious bedrooms and three bathrooms, providing plenty of space and privacy for family and guests. Stay warm and cozy during the winter months with in-floor radiant heating, while the sleek solid surface countertops and stainless steel appliances add a modern touch to the well-appointed kitchen. Large windows flood the interior with natural light creating a serene and inviting atmosphere. Additional features include a single-car garage with ample storage for all your gear and low strata fees within a quiet, exclusive complex of just five units. Whether you're looking for a full-time residence, a vacation retreat, or a lucrative rental property, this townhome offers an unparalleled opportunity to own a piece of paradise at Apex Mountain. (id:6289)

Built in 2011

## Essential Information

Listing #	10356767
Price	\$575,000
Bedrooms	3



Bathrooms	3.00
Half Baths	1
Square Footage	1,193
Acres	1.00
Year Built	2011
Type	Single Family
Sub-Type	Strata
Style	Other

### Community Information

Address	300 Creekview Road Unit# 2
Subdivision	Penticton Apex
City	Penticton
Province	British Columbia
Postal Code	V0X1N6

### Amenities

Amenities	Recreation, Ski area
Features	Private setting, Balcony, One Balcony
Parking Spaces	1
Parking	Attached Garage
# of Garages	1
View	River view, Mountain view

### Interior

Appliances	Dishwasher, Cooktop - Electric, Oven - Electric, Range - Electric, Microwave, Washer/Dryer Stack-Up
Heating	Electric, Other Baseboard heaters
# of Stories	2

### Exterior

Exterior	Other
Roof	Asphalt shingle

### Additional Information

Zoning	Unknown
--------	---------

### Listing Details

Listing Office	Chamberlain Property Group
----------------	----------------------------



The trademarks MLS®, Multiple Listing Service® and the associated logos are owned by The Canadian Real Estate Association (CREA) and identify the quality of services provided by real estate professionals who are members of CREA. REALTOR®. Member of CREA and more.

Listing information last updated on October 12th, 2025 at 3:18pm PDT