

# \$499,000 - 3331 Evergreen Drive Unit# 109, Penticton

MLS® #10356723

**\$499,000**

0 Bedroom, 0.00 Bathroom,  
Vacant Land on 0.60 Acres

Wiltse/Valleyview, Penticton, British Columbia

Building lot at Skaha Bluff Estates Bareland Strata with breathtaking views, ready to build your dream home here! Truly one of the most spectacular view lots in Penticton with the rarity of seeing both lakes plus all the city has to offer in between. Great area, close to all the amenities the in south end of Penticton, but tucked away for some privacy which makes you feel far removed from the bustle of the city. Plenty of site prep already completed, plus building plans available upon request. (id:6289)

## Essential Information

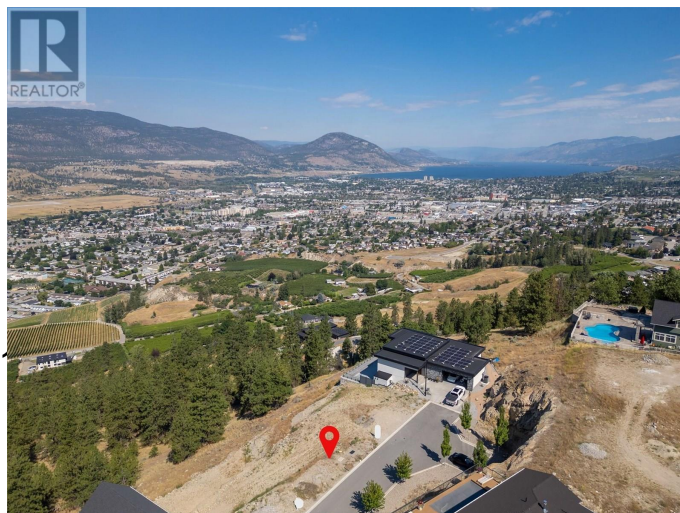
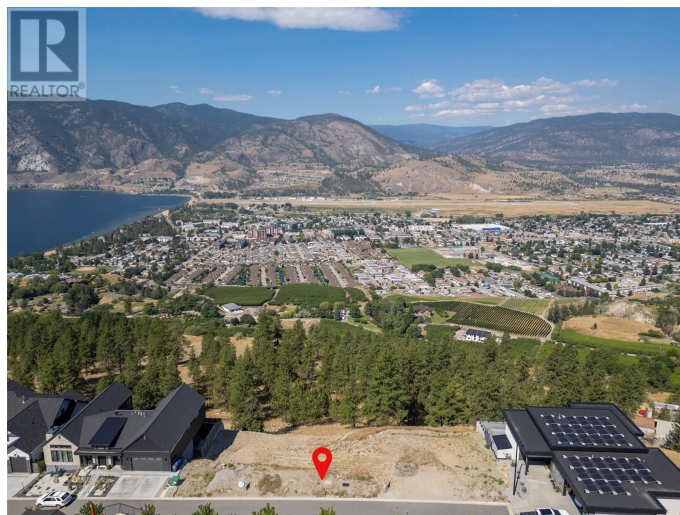
Listing #	10356723
Price	\$499,000
Bathrooms	0.00
Acres	0.60
Type	Vacant Land
Sub-Type	Strata

## Community Information

Address	3331 Evergreen Drive Unit#
Subdivision	Wiltse/Valleyview
City	Penticton
Province	British Columbia
Postal Code	V2A0J3

## Amenities

Amenities	Park, Recreation, Schools, Shopping
-----------	-------------------------------------



Utilities	Electricity, Natural Gas, Telephone, Sewer, Water
Features	Private setting
View	City view, Lake view, Mountain view, View (panoramic)

### Additional Information

Zoning	Unknown
--------	---------

### Listing Details

Listing Office	Royal LePage Locations West
----------------	-----------------------------



The trademarks MLS®, Multiple Listing Service® and the associated logos are owned by The Canadian Real Estate Association (CREA) and identify the quality of services provided by real estate professionals who are members of CREA. REALTOR®. Member of CREA and more.

Listing information last updated on October 13th, 2025 at 8:16am PDT