

\$749,000 - 11612 Victoria Road S Unit# 102, Summerland

MLS® #10356231

\$749,000

5 Bedroom, 4.00 Bathroom, 2,326 sqft
Single Family on 0.05 Acres

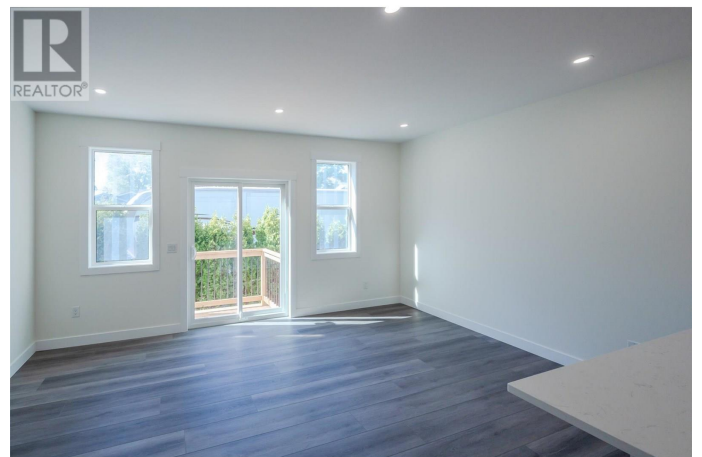
Main Town, Summerland, British Columbia

Brand new half duplex near Giants Head Elementary in Summerland! Two storey, 2,326sqft, 4 bed, 4 bath home. Best part is no strata fees and no restrictions! Main floor with open concept living room to kitchen with all new appliances, a 2pc bath, bedroom that can be used as office space or play room etc! Upstairs you will find your primary bedroom with large walk-in closet and 4pc ensuite, 2 bedrooms, another 4pc bath & full laundry room! Private fenced yard with patio and 2 off street parking stalls. Near Dale Meadows sports fields, close to Giants Head Mountain Park, and a short distance to all downtown Summerland has to offer! Property is currently under construction with estimated completion late 2025. Contingent upon final subdivision registration & occupancy. Contact listing agent for more! (id:6289)

Built in 2025

Essential Information

Listing #	10356231
Price	\$749,000
Bedrooms	5
Bathrooms	4.00
Half Baths	1
Square Footage	2,326
Acres	0.05



Year Built	2025
Type	Single Family
Sub-Type	Strata
Style	Split level entry

Community Information

Address	11612 Victoria Road S Unit# 102
Subdivision	Main Town
City	Summerland
Province	British Columbia
Postal Code	V0H1Z2

Amenities

Amenities	Park, Recreation, Schools
Features	Level lot
Parking Spaces	2
Parking	Stall
View	Mountain view

Interior

Appliances	Refrigerator, Dishwasher, Microwave, Oven, Washer & Dryer
Heating	Electric Heat Pump
Cooling	Heat Pump
# of Stories	3

Exterior

Exterior	Other
Exterior Features	Landscaped, Level
Roof	Asphalt shingle

Additional Information

Zoning	Unknown
--------	---------

Listing Details

Listing Office	Royal LePage Locations West
----------------	-----------------------------



Association (CREA) and identify the quality of services provided by real estate professionals who are members of CREA. REALTOR®. Member of CREA and more.

Listing information last updated on October 14th, 2025 at 11:01pm PDT