

# \$265,000 - 55 Beacon Road, Carmi

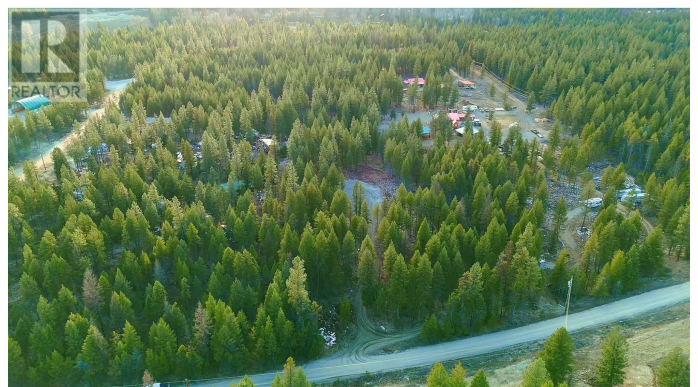
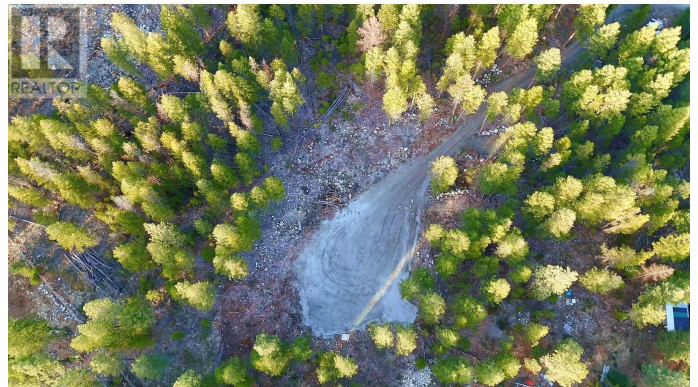
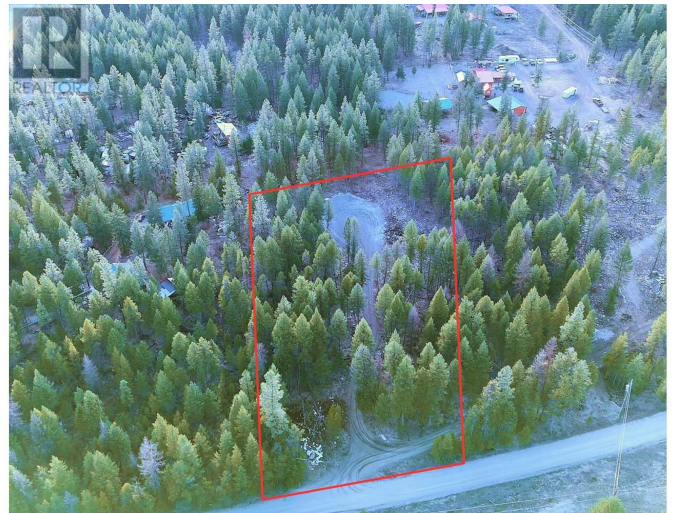
MLS® #10355173

**\$265,000**

0 Bedroom, 0.00 Bathroom,  
Vacant Land on 2.43 Acres

Beaverdell/Carmi, Carmi, British Columbia

Your outdoor living dream starts here. This peaceful and private 2.43-acre lot in Carmi is the perfect blank slate for your next adventure—whether that’s weekend getaways with the family, a future cabin build, or a creative, secluded home you’ve always dreamed of. With a flat, cleared section already in place, there’s plenty of room to pull up the campers, gather around the fire with friends, or start planning your vision—without the limits of ARL or zoning, you have the freedom to create something truly unique. A well is already drilled, and electricity is available with a 200amp service power shed, making your future plans that much easier to bring to life. Located just a short walk to the Kettle River and a quick drive to a stocked fishing lake, this area is a launchpad for camping, hiking, fishing, side-by-siding, mountain biking, hunting, and more. Whether you’re seeking seclusion, adventure, or a little bit of both—this property is your backcountry basecamp just waiting to happen. Build, explore, or simply unplug to enjoy the quiet life! (id:6289)



## Essential Information

Listing #	10355173
Price	\$265,000
Bathrooms	0.00
Acres	2.43

Type	Vacant Land
Sub-Type	Freehold

### Community Information

Address	55 Beacon Road
Subdivision	Beaverdell/Carmi
City	Carmi
Province	British Columbia
Postal Code	V0H1A0

### Amenities

Utilities	Electricity, Telephone, Water
-----------	-------------------------------

### Additional Information

Zoning	Unknown
--------	---------

### Listing Details

Listing Office	Royal LePage Kelowna
----------------	----------------------



The trademarks MLS®, Multiple Listing Service® and the associated logos are owned by The Canadian Real Estate Association (CREA) and identify the quality of services provided by real estate professionals who are members of CREA. REALTOR®. Member of CREA and more.

Listing information last updated on October 13th, 2025 at 5:46pm PDT