

\$639,000 - 316 Whitman Road Unit# 4, Kelowna

MLS® #10352931

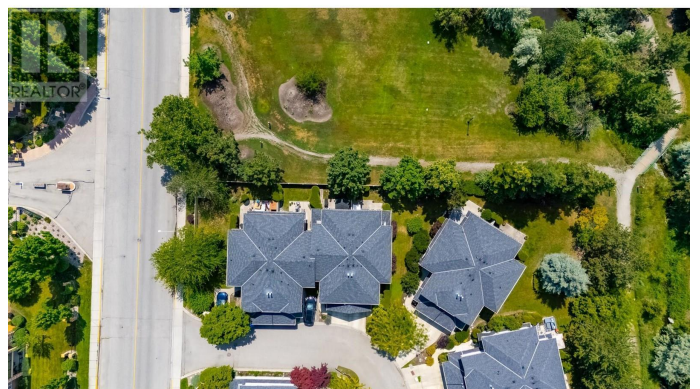
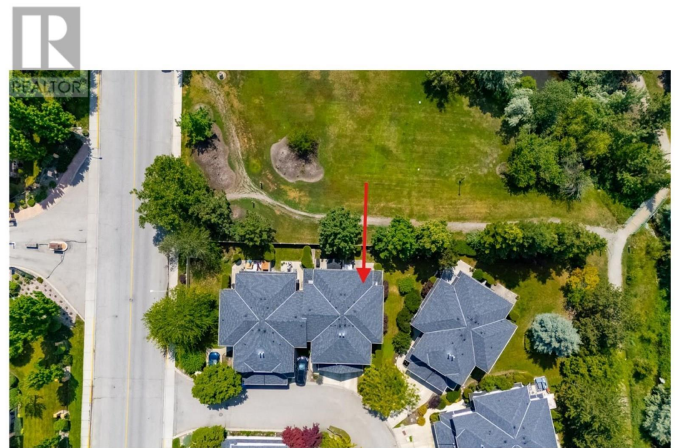
\$639,000

2 Bedroom, 3.00 Bathroom, 1,484 sqft

Single Family on 1.00 Acres

North Glenmore, Kelowna, British Columbia

Welcome to Le Mirage, a phenomenal complex located in the heart of one of Kelowna's most sought-after and convenient locations, North Glenmore. This 2 bed, 2 bath townhome feels spacious with its high ceilings, open living room, and generously sized bedrooms. Situated on an end unit, you'll enjoy a rare and large private side yard backing onto Glen Whitman Park, offering a lush green space for the whole family to enjoy. This prime location is within walking distance to shopping, restaurants, and various commercial amenities including IGA, Shoppers Drug Mart, Bright Jenny Coffee, and many others. As soon as you enter the home, you'll be stunned by the bright living and dining area flooded with natural light, walking out to your private green backyard space. The kitchen offers a clean and functional layout that sets the tone for comfortable main floor living. Upstairs, the home features a large primary bedroom with soaring ceilings overlooking the park, a good-sized walk-in closet, and an ensuite bathroom. The second bedroom is also generously sized and is accompanied by a large 4-piece bathroom and an additional open office space that offers versatility and convenience. You'll also enjoy your own single-car garage and parking for another vehicle or guests in the driveway. This complex is a win if you value private space for the family, walkability, and a quiet, peaceful lifestyle. Reach out today to view this amazing home! (id:6289)



Built in 1994

Essential Information

Listing #	10352931
Price	\$639,000
Bedrooms	2
Bathrooms	3.00
Half Baths	1
Square Footage	1,484
Acres	1.00
Year Built	1994
Type	Single Family
Sub-Type	Strata
Style	Other

Community Information

Address	316 Whitman Road Unit# 4
Subdivision	North Glenmore
City	Kelowna
Province	British Columbia
Postal Code	V1V1Y9

Amenities

Amenities	Golf Nearby, Airport, Park, Recreation, Schools, Shopping, Ski area, Cable TV
Features	Level lot, Private setting, Corner Site
Parking Spaces	2
Parking	Attached Garage
# of Garages	1
View	Mountain view
Is Waterfront	Yes
Waterfront	Waterfront on stream

Interior

Appliances	Refrigerator, Dishwasher, Dryer, Range - Electric, Microwave, Washer
Heating	Forced air, See remarks
Cooling	Central air conditioning
Fireplace	Yes
# of Fireplaces	1

Fireplaces	Gas
# of Stories	2

Exterior

Exterior	Stucco
Exterior Features	Landscaped, Level
Roof	Asphalt shingle

Additional Information

Zoning	Unknown
--------	---------

Listing Details

Listing Office	Chamberlain Property Group
----------------	----------------------------



The trademarks MLS®, Multiple Listing Service® and the associated logos are owned by The Canadian Real Estate Association (CREA) and identify the quality of services provided by real estate professionals who are members of CREA. REALTOR®. Member of CREA and more.

Listing information last updated on October 14th, 2025 at 6:31am PDT