

# \$849,000 - 250 Feathertop Way Unit# 112, Big White

MLS® #10352201

**\$849,000**

3 Bedroom, 2.00 Bathroom, 1,528 sqft  
Single Family on 1.00 Acres

Big White, Big White, British Columbia

Copper Kettle is located right on the ski run and close to the village. This concrete constructed building offers quality throughout and perfect views of the Monashee Mountains.

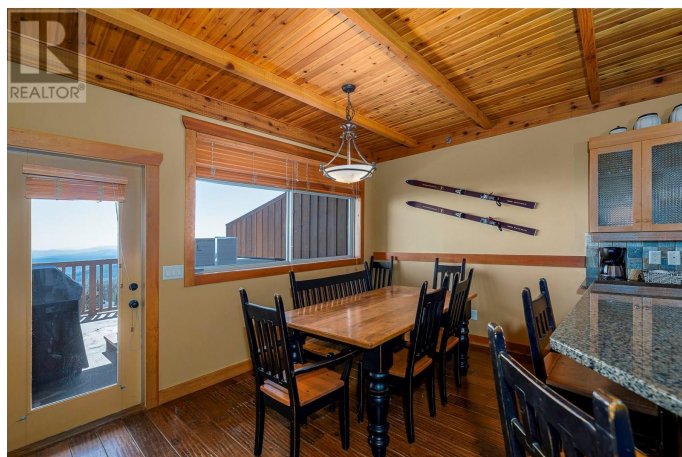
Heated floors in every room, private hot tub on the deck, and an oversized deck that is the largest in the complex. This unit comes fully furnished and turn key ready for rentals. It is in the Big White Central Reservations rental pool and GST is applicable. This unit also comes with an extra storage room in the garage that is very unique and provides more space for the owner to store their personal belongings. It also comes with two large ski lockers right by the ski access. An outstanding unit that ticks all the boxes. (id:6289)

Built in 2006

## Essential Information

Listing #	10352201
Price	\$849,000
Bedrooms	3
Bathrooms	2.00
Square Footage	1,528
Acres	1.00
Year Built	2006
Type	Single Family
Sub-Type	Strata
Style	Contemporary

## Community Information



Address	250 Feathertop Way Unit# 112
Subdivision	Big White
City	Big White
Province	British Columbia
Postal Code	V1P1T4

### **Amenities**

Parking Spaces	1
Parking	Underground

### **Interior**

Heating	Other
# of Stories	1

### **Additional Information**

Zoning	Unknown
--------	---------

### **Listing Details**

Listing Office	RE/MAX Kelowna
----------------	----------------



The trademarks MLS®, Multiple Listing Service® and the associated logos are owned by The Canadian Real Estate Association (CREA) and identify the quality of services provided by real estate professionals who are members of CREA. REALTOR®. Member of CREA and more.

Listing information last updated on October 14th, 2025 at 4:16am PDT