

\$860,000 - 188 Walden Crescent, Penticton

MLS® #10352135

\$860,000

4 Bedroom, 2.00 Bathroom, 2,424 sqft

Single Family on 0.30 Acres

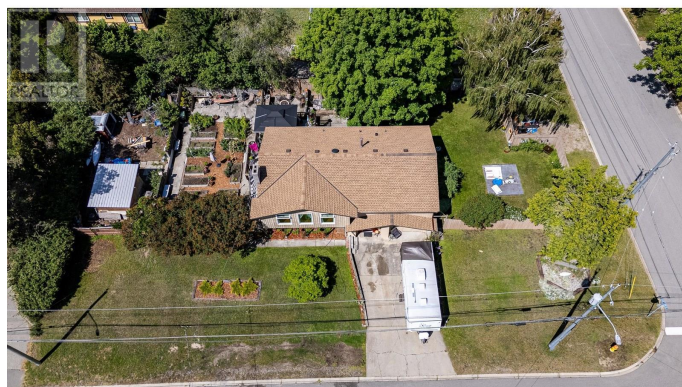
Uplands/Redlands, Penticton, British Columbia

Welcome to this 4 bedroom , 2 bathroom family home situated on a generous half-acre lot in the prestigious Uplands neighbourhood. This bright and inviting 4-bedroom, 3-bathroom residence offers the perfect blend of comfort, space, and privacy. Highlights include: Over 2,424 sq ft of living space, enjoy the main level layout with living room, dining room, kitchen that walkout to a large deck and backyard. On the main you will also find the primary suite, two additional bedrooms and main bathroom ideal for family and guests. The lower level holds one bedroom, a cozy family room, bathroom, laundry and access to the garage. There is an expansive .30 of an acre yard with mature landscaping – perfect for entertaining, children playing or relaxing. Single car garage 25 x 12, ample parking, and storage space. Located in a quiet, tree-lined area near top-rated schools, parks, and amenities, this is a rare opportunity to own a sizeable property in one of the area's most sought-after communities. (id:6289)

Built in 1962

Essential Information

Listing #	10352135
Price	\$860,000
Bedrooms	4
Bathrooms	2.00
Square Footage	2,424



Acres	0.30
Year Built	1962
Type	Single Family
Sub-Type	Freehold

Community Information

Address	188 Walden Crescent
Subdivision	Uplands/Redlands
City	Penticton
Province	British Columbia
Postal Code	V2A1R7

Amenities

Utilities	Cable, Electricity, Natural Gas, Telephone, Sewer, Water
Features	Level lot, Private setting, Treed, Corner Site, One Balcony
Parking Spaces	1
Parking	Additional Parking, Attached Garage, RV, Street
# of Garages	1
View	Lake view, Mountain view

Interior

Appliances	Range, Refrigerator, Dryer, Range - Electric, Water Heater - Electric, See remarks, Oven, Washer & Dryer
Heating	Forced air, See remarks
Cooling	Window air conditioner
Fireplace	Yes
# of Fireplaces	2
Fireplaces	Wood
# of Stories	2

Exterior

Exterior	Wood
Exterior Features	Landscaped, Level
Roof	Asphalt shingle

Additional Information

Zoning	Unknown
--------	---------

Listing Details

Listing Office	Parker Real Estate
----------------	--------------------



The trademarks MLS®, Multiple Listing Service® and the associated logos are owned by The Canadian Real Estate Association (CREA) and identify the quality of services provided by real estate professionals who are members of CREA. REALTOR®. Member of CREA and more.

Listing information last updated on October 13th, 2025 at 7:01pm PDT