

\$1,299,000 - 3025 Naramata Road, Naramata

MLS® #10350222

\$1,299,000

4 Bedroom, 4.00 Bathroom, 3,437 sqft

Single Family on 1.91 Acres

Naramata Rural, Naramata, British Columbia

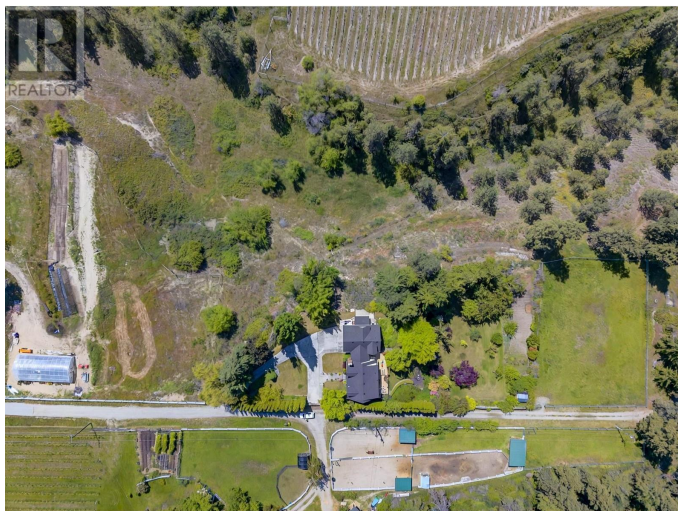
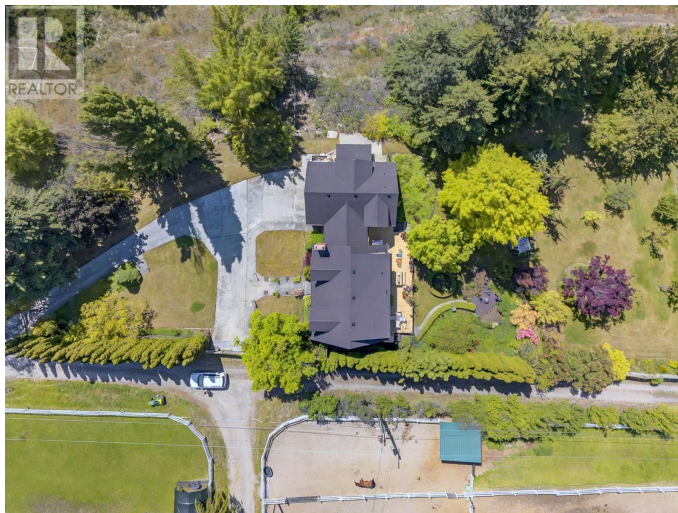
Tucked away on 1.91 impeccably landscaped acres, this private Naramata retreat offers the best of rural living just minutes from the village. Built in 1981, the two-story home features 3 bedrooms and 3 bathrooms, with warm wood finishes, large windows, and a spacious, functional layout. Additionally, an attached, self-contained 1-bedroom suite with a private entrance provides excellent flexibility for guests, extended family, or rental income. The basement includes a large games room, office space, and generous storage. A two-car garage with workshop space adds practicality, while the beautifully manicured yard is a gardener's dream—abundant with vegetable plots, fruit trees, and lush plantings throughout. Accessed via a private drive, the property offers peace, seclusion, and room to grow. Ideal for families, hobbyists, or those seeking space and tranquility close to Naramata's wineries, beaches, and trails—this unique offering delivers lifestyle, versatility, and privacy in one exceptional package. All measurements are from floor plans. Contact your favourite agent today for a private tour. (id:6289)

Built in 1981

Essential Information

Listing # 10350222

Price \$1,299,000



Bedrooms	4
Bathrooms	4.00
Half Baths	1
Square Footage	3,437
Acres	1.91
Year Built	1981
Type	Single Family
Sub-Type	Freehold

Community Information

Address	3025 Naramata Road
Subdivision	Naramata Rural
City	Naramata
Province	British Columbia
Postal Code	V0H1N1

Amenities

Features	Level lot
Parking Spaces	2
Parking	Attached Garage
# of Garages	2

Interior

Appliances	Range, Refrigerator, Dishwasher, Dryer, Washer
Heating	Electric Forced air
Cooling	Central air conditioning
Fireplace	Yes
# of Fireplaces	1
# of Stories	2

Exterior

Exterior	Brick, Stucco
Exterior Features	Landscaped, Level, Underground sprinkler
Roof	Asphalt shingle

Additional Information

Zoning	Unknown
--------	---------

Listing Details

Listing Office

Royal LePage Locations West



The trademarks MLS®, Multiple Listing Service® and the associated logos are owned by The Canadian Real Estate Association (CREA) and identify the quality of services provided by real estate professionals who are members of CREA. REALTOR®. Member of CREA and more.

Listing information last updated on October 14th, 2025 at 10:31pm PDT