

\$1,350,000 - 390 Asher Road, Kelowna

MLS® #10340946

\$1,350,000

4 Bedroom, 1.00 Bathroom, 2,000 sqft

Single Family on 0.21 Acres

Rutland North, Kelowna, British Columbia

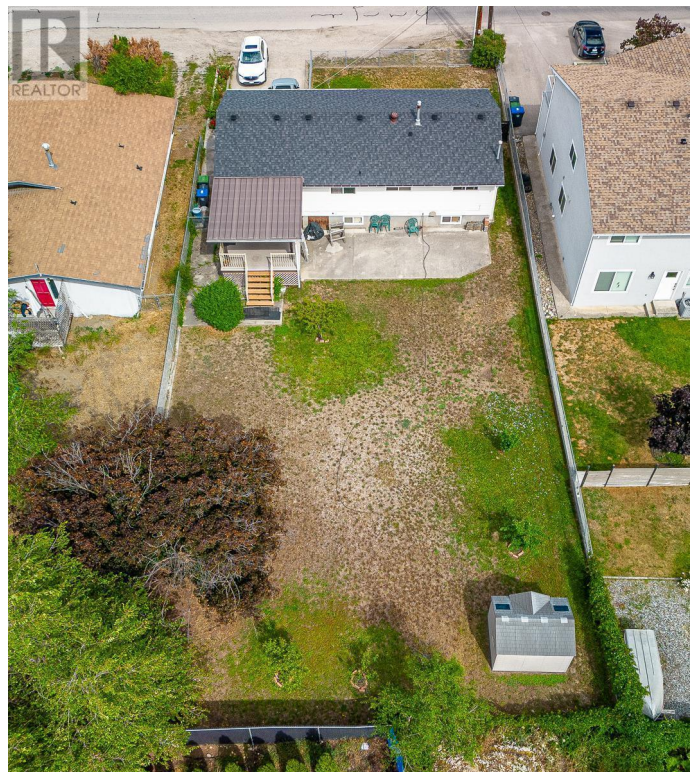
Presenting an exceptional land assembly with amazing potential for a 6 to 9 storey multifamily building and the opportunity to do a rental-purposed build. Located within 400 meters of a major transit exchange, this site qualifies for parking exemptions, enhancing development efficiency and affordability. With favorable zoning and strong population growth, the site is ideally positioned to meet Kelowna's rising housing demand. Proximity to key amenities including schools, shopping, parks, and UBCO this is a chance for developers and investors to capitalize on a high-density project in one of Kelowna's fastest-growing urban neighborhoods. (id:6289)

Built in 1964

Essential Information

Listing #	10340946
Price	\$1,350,000
Bedrooms	4
Bathrooms	1.00
Square Footage	2,000
Acres	0.21
Year Built	1964
Type	Single Family
Sub-Type	Freehold
Style	Ranch

Community Information



Address	390 Asher Road
Subdivision	Rutland North
City	Kelowna
Province	British Columbia
Postal Code	V1X3H7

Amenities

Parking Spaces	5
Parking	Additional Parking, Attached Garage
# of Garages	1
View	Mountain view

Interior

Heating	Forced air, See remarks
Cooling	Central air conditioning
# of Stories	2

Exterior

Exterior	Stucco
Roof	Asphalt shingle

Additional Information

Zoning	Unknown
--------	---------

Listing Details

Listing Office	eXp Realty (Kelowna)
----------------	----------------------



The trademarks MLS®, Multiple Listing Service® and the associated logos are owned by The Canadian Real Estate Association (CREA) and identify the quality of services provided by real estate professionals who are members of CREA. REALTOR®. Member of CREA and more.

Listing information last updated on October 13th, 2025 at 3:17pm PDT