

\$659,000 - 4000 Redstone Crescent Ne Unit# 221 Lot# S Lot 32 P, Peachland

MLS® #10340561

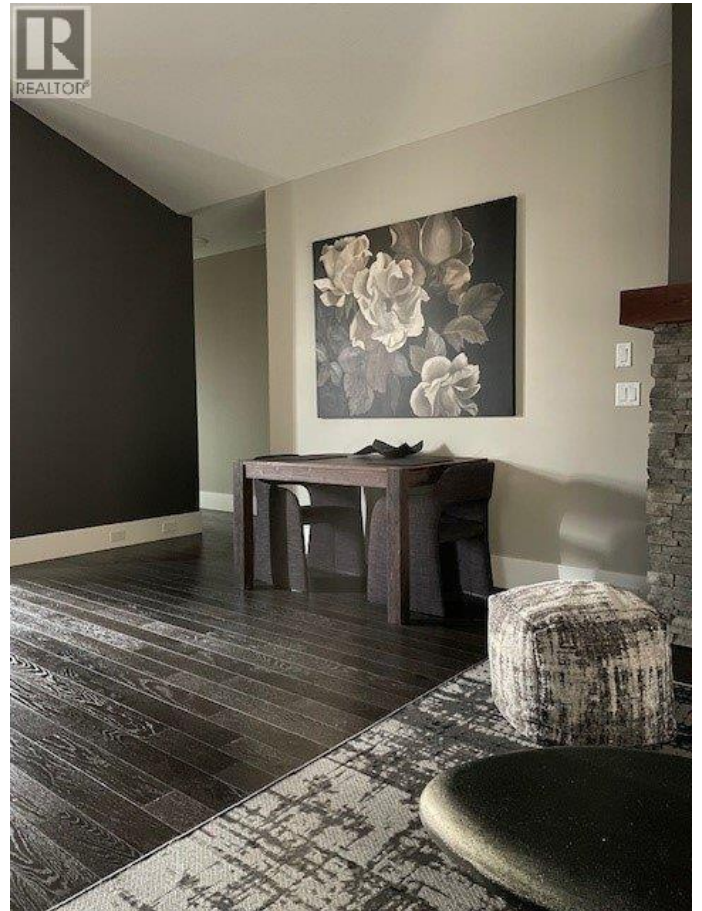
\$659,000

2 Bedroom, 2.00 Bathroom, 1,519 sqft
Single Family on 1.00 Acres

Peachland, Peachland, British Columbia

2 bed, 2 bath, Top Floor, End-unit Townhouse offering spacious living and a Huge covered wraparound deck. Prime location at the end of the street, with stunning unobstructed green space views, including Pincushion Mountain. Serene and peaceful, it is surrounded by endless hiking and walking trails. It features an open floor plan with vaulted ceilings, expansive windows, high-end custom blinds, hardwood flooring, and extra-large decks with a gas BBQ outlet. The designer kitchen features a large island with bar, granite countertops, a pantry, s/s appliances, a gas stove, with tons of custom white maple shaker cabinetry. The large, vaulted ceiling Master bedroom has his and her closets and a spa-like 5 piece ensuite with a deep soaker tub. Additional features: high-efficiency Geothermal Heating/Cooling which is included in the low strata fee, smart home doorbell/thermostat, central vac, gas fireplace, garage, new dimmer switches on all indoor/outdoor lighting, new carpeting and freshly painted. This home is minutes away from everything the Okanagan has to offer - including a brand-new golf course that will be completed in 2026, which is just a stroll away. Pets are allowed with no size restrictions. (id:6289)

Built in 2014



Essential Information

Listing #	10340561
Price	\$659,000
Bedrooms	2
Bathrooms	2.00
Square Footage	1,519
Acres	1.00
Year Built	2014
Type	Single Family
Sub-Type	Strata
Style	Contemporary

Community Information

Address	4000 Redstone Crescent Ne Unit# 221 Lot# S Lot 32 P
Subdivision	Peachland
City	Peachland
Province	British Columbia
Postal Code	V0H1X5

Amenities

Amenities	Golf Nearby, Recreation, Shopping
Utilities	Cable, Electricity, Natural Gas, Telephone, Sewer, Water
Features	Private setting, Treed, Central island, Balcony, Two Balconies
Parking Spaces	2
Parking	Attached Garage
# of Garages	1
View	Lake view, Mountain view, Valley view

Interior

Appliances	Refrigerator, Dishwasher, Dryer, Cooktop - Gas, Microwave, Oven, Hood Fan, Washer/Dryer Stack-Up
Heating	Geo Thermal
Cooling	See Remarks
Fireplace	Yes
# of Fireplaces	1
Fireplaces	Gas
# of Stories	2

Exterior

Exterior Cedar Siding, Stone, Wood, V
Exterior Features Rolling
Roof Asphalt shingle

Additional Information

Zoning Unknown

Listing Details

Listing Office TRG The Residential Group Do



The trademarks MLS®, Multiple Listing Service® and the associated logos are owned by The Canadian Real Estate Association (CREA) and identify the quality of services provided by real estate professionals who are members of CREA. REALTOR®. Member of CREA and more.
Listing information last updated on October 14th, 2025 at 8:01pm PDT