

\$725,000 - 17680 Rawsthorne Road, Lake Country

MLS® #10340531

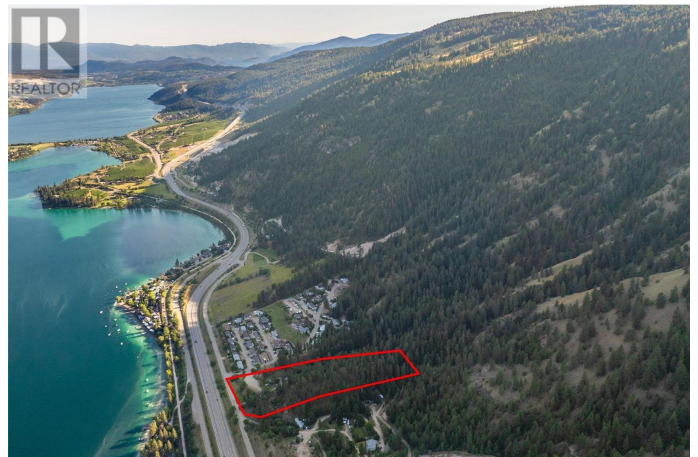
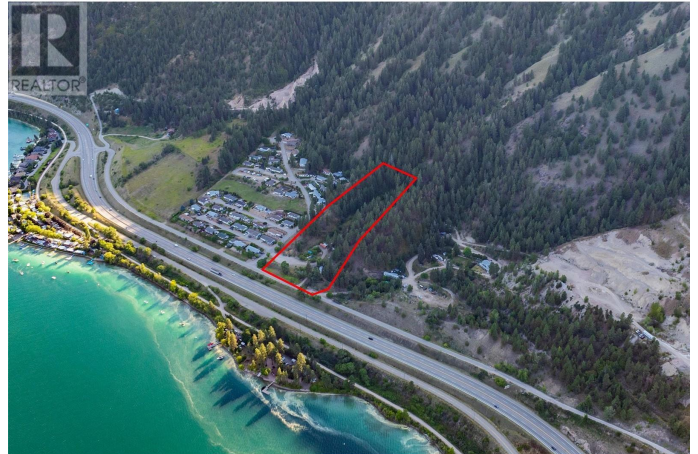
\$725,000

2 Bedroom, 1.00 Bathroom, 1,082 sqft

Single Family on 9.67 Acres

Lake Country East / Oyama, Lake Country,
British Columbia

Presenting a stunning 9.671 acre lot overlooking the pristine waters of Kalamalka Lake. A rare offering of location, size & unparalleled lake views - a stunning canvas to build & design your sprawling custom dream-home! With an abundance of trees for creating a private retreat & paved easy access city roads to your driveway plus many services hooked up - this is a one-of-a-kind opportunity. The location is second to none nestled in the Okanagan Valley, Lake Country is highly desired renowned wineries, flourishing orchards, world class restaurants, golfing, beaches & more! You are minutes to the Okanagan Rail Trail, 13min to Predator Ridge Gold Resort, 20min to Kelowna International Airport & 40min to Silver Star Mountain Resort. Property is currently zoned RR1 - zoning for residential development such as one single detached house (which may contain a secondary suite); accessory buildings or structures (which may contain an accessory suite). A mobile or manufactured home as an accessory suite. Your opportunity for a home based business! VIEWINGS ARE BY APPOINTMENT ONLY. Please do not walk this lot without a Realtor. Older mobile on site would best serve as temporary residence while building. Mobile home is currently serviced with water (untreated), power, cable, propane and connected to septic. Neighbouring Kal Pine Private water utility & Fortis Gas easily accessible to be run to the lot by new owner.



Under the current zoning, this property
CANNOT be subdivided. (id:6289)

Built in 1972

Essential Information

Listing #	10340531
Price	\$725,000
Bedrooms	2
Bathrooms	1.00
Square Footage	1,082
Acres	9.67
Year Built	1972
Type	Single Family
Sub-Type	Freehold

Community Information

Address	17680 Rawsthorne Road
Subdivision	Lake Country East / Oyama
City	Lake Country
Province	British Columbia
Postal Code	V4V2G1

Amenities

Amenities	Golf Nearby, Airport, Park, Recreation, Schools, Shopping
Utilities	Cable, Electricity, Natural Gas, Water
Features	Private setting, Treed, Irregular lot size
Parking	Oversize, RV
View	Lake view, Mountain view, Valley view, View (panoramic)

Interior

Heating	See remarks
# of Stories	1

Exterior

Roof	Asphalt shingle
------	-----------------

Additional Information

Zoning	Unknown
--------	---------

Listing Details

Listing Office Oakwyn Realty Okanagan



The trademarks MLS®, Multiple Listing Service® and the associated logos are owned by The Canadian Real Estate Association (CREA) and identify the quality of services provided by real estate professionals who are members of CREA. REALTOR®. Member of CREA and more.

Listing information last updated on October 13th, 2025 at 9:46pm PDT