

\$959,000 - 680 Tartan Road, Rutland

MLS® #10325025

\$959,000

6 Bedroom, 3.00 Bathroom, 2,460 sqft

Single Family on 0.28 Acres

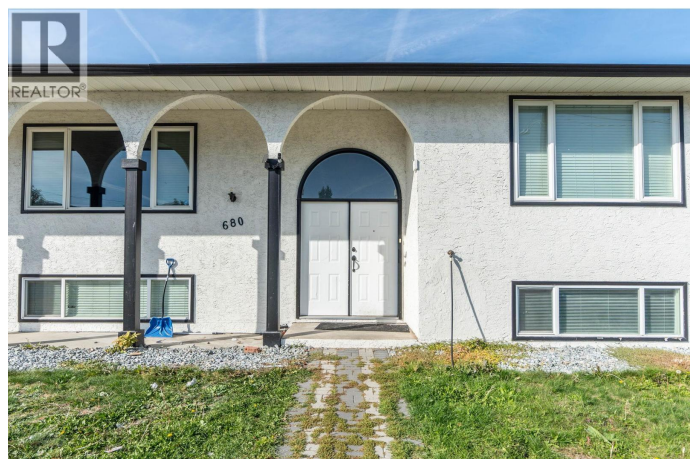
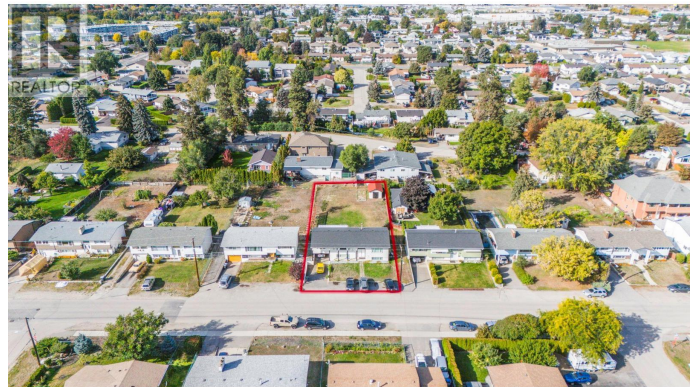
Rutland North, Rutland, British Columbia

Are you an investor searching for your next big opportunity? Look no further. This property presents an incredible chance for growth and maximized potential. With six bedrooms and three bathrooms, this home offers plenty of space for tenants or potential buyers. The layout is perfect for multi-family living and features a separate entrance for added convenience. The main living area is bright and spacious, with plenty of natural light and room for entertaining. But that's not all. This property also includes a fully self-contained, two-bedroom suite with its own private entrance. The possibilities are endless as you could rent out both units or utilize one for personal use. Located on a large MF1 lot, this property holds immense potential for future development. Don't miss out on this amazing investment opportunity. Contact us today to learn more and schedule a viewing. (id:6289)

Built in 1973

Essential Information

Listing #	10325025
Price	\$959,000
Bedrooms	6
Bathrooms	3.00
Square Footage	2,460
Acres	0.28
Year Built	1973
Type	Single Family



Sub-Type Freehold

Community Information

Address 680 Tartan Road
Subdivision Rutland North
City Rutland
Province British Columbia
Postal Code V1X3L3

Amenities

Features One Balcony
Parking Spaces 6
Parking Additional Parking

Interior

Heating Electric Forced air, See remarks
Cooling Central air conditioning
Fireplace Yes
of Fireplaces 2
Fireplaces Electric
of Stories 2

Exterior

Exterior Stucco
Roof Asphalt shingle

Additional Information

Zoning Unknown

Listing Details

Listing Office RE/MAX Kelowna



The trademarks MLS®, Multiple Listing Service® and the associated logos are owned by The Canadian Real Estate Association (CREA) and identify the quality of services provided by real estate professionals who are members of CREA. REALTOR®. Member of CREA and more.

Listing information last updated on October 14th, 2025 at 5:33am PDT