

\$365,900 - 1009 835 View St, Victoria

MLS® #1010892

\$365,900

1 Bedroom, 1.00 Bathroom, 470 sqft
Single Family on 0.01 Acres

Downtown, Victoria, British Columbia

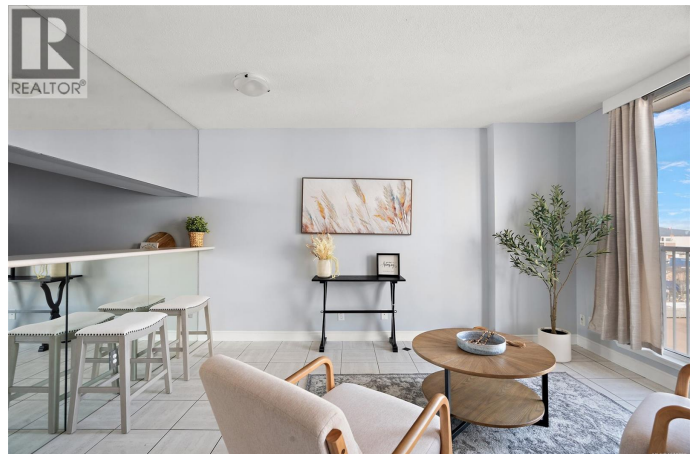
Experience urban living at its finest with this high-floor suite in "The Metropolitan" a well-maintained steel and concrete building in downtown Victoria. This easy-care bachelor suite features tile floors throughout, in-suite laundry, and a sliding glass door with a Juliet balcony offering stunning views. Enjoy the vibrant cafes, restaurants, and proximity to the famous Inner Harbour, historic Old Town, and Beacon Hill Park. Rentable and pet-friendly, this suite allows for one small dog (up to 20 lbs), a cat, or other caged pets. The building includes secure bike storage and potential for underground parking rental, making it a convenient choice for downtown living. This property is a perfect investment opportunity. (id:6289)

Built in 1995

Essential Information

Listing #	1010892
Price	\$365,900
Bedrooms	1
Bathrooms	1.00
Square Footage	470
Acres	0.01
Year Built	1995
Type	Single Family
Sub-Type	Strata

Community Information



Address	1009 835 View St
Subdivision	Downtown
City	Victoria
Province	British Columbia
Postal Code	V8W3W8

Amenities

Parking	None
---------	------

Interior

Heating	Baseboard heaters
Cooling	Window air conditioner

Additional Information

Zoning	Multi-Family
--------	--------------

Listing Details

Listing Office	Coldwell Banker Oceanside Real Estate
----------------	---------------------------------------



The trademarks MLS®, Multiple Listing Service® and the associated logos are owned by The Canadian Real Estate Association (CREA) and identify the quality of services provided by real estate professionals who are members of CREA. REALTOR®. Member of CREA and more.

Listing information last updated on October 14th, 2025 at 12:31am PDT