

\$314,000 - 201 550 Bradley St, Nanaimo

MLS® #1009040

\$314,000

2 Bedroom, 1.00 Bathroom, 886 sqft

Single Family

BRADLEY PLACE, Nanaimo, British Columbia

Southeast facing corner 2 bedrooms unit, huge wrap around balcony with city view & Mt Benson view. Secured front entry, secured underground parking, bike storage. Open floor plan, very appealing layout. The unit is very well kept with style kitchen, newer hotwater tank, just a 15 minute walk to waterfront, and the transit is only 1 block away! (id:6289)

Built in 1981

Essential Information

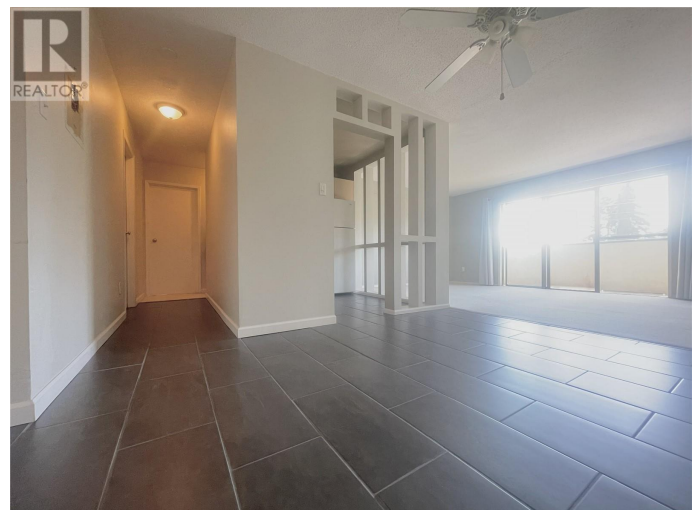
Listing #	1009040
Price	\$314,000
Bedrooms	2
Bathrooms	1.00
Square Footage	886
Year Built	1981
Type	Single Family
Sub-Type	Strata

Community Information

Address	201 550 Bradley St
Subdivision	BRADLEY PLACE
City	Nanaimo
Province	British Columbia
Postal Code	V9S5N4

Amenities

Features	Central location, Other, Marine Oriented
----------	--



Parking Spaces 1

Interior

Heating Electric Baseboard heaters

Cooling None

Additional Information

Zoning Multi-Family

Listing Details

Listing Office Sutton Group-West Coast Realty (Nan)



The trademarks MLS®, Multiple Listing Service® and the associated logos are owned by The Canadian Real Estate Association (CREA) and identify the quality of services provided by real estate professionals who are members of CREA. REALTOR®. Member of CREA and more.

Listing information last updated on October 14th, 2025 at 3:16pm PDT