

# \$5,900,000 - 47521 Chartwell Drive, Chilliwack

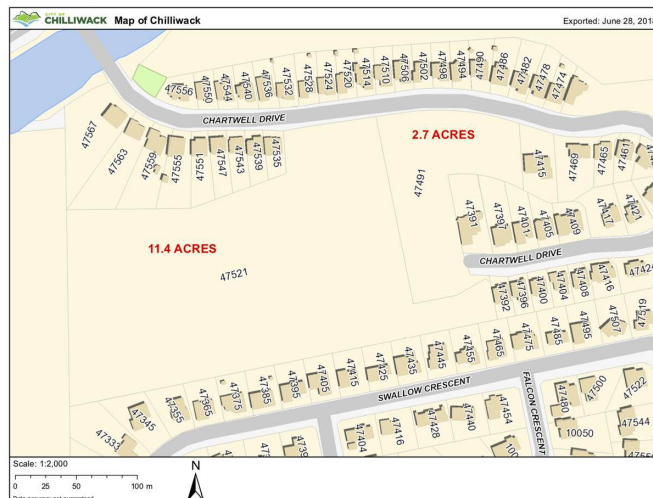
MLS® #C8031187

**\$5,900,000**

Bedroom, Bathroom,  
Land â€“ Commercial on 11 Acres

Little Mountain, Chilliwack, BC

Court Ordered Sale. Residential Development Property on desirable, upscale Little Mountain. Cmrently Zoned R1A. All services at lot line. Incredible views, peacefal and surrounded by greenspace. This 11.4 acre parcel to be sold in conjunction with adjoining 2.7 acres for a total of 14.1 Acres. This is a rare opporhimity in a prime neighbourhood, close to schools, parks. etc. Original plans for 49 lots. Information package available. FINANCING AVAILABLE.



## Essential Information

MLS® #	C8031187
Price	\$5,900,000
Acres	11.40
Type	Land â€“ Commercial
Status	ACTIVE

## Community Information

Address	47521 Chartwell Drive
Subdivision	Little Mountain
City	Chilliwack
State	BC
Zip Code	V2P 8A3

## Additional Information

Zoning	R1A
--------	-----

## Listing Details

Listing Office

Century 21 Creekside Realty

The data relating to real estate on this web site comes in part from the MLS Reciprocity program of the Real Estate Board of Greater Vancouver or the Fraser Valley Real Estate Board. Real estate listings held by participating real estate firms are marked with the MLSR logo and detailed information about the listing includes the name of the listing agent. This representation is based in whole or part on data generated by the Real Estate Board of Greater Vancouver or the Fraser Valley Real Estate Board which assumes no responsibility for its accuracy. The materials contained on this page may not be reproduced without the express written consent of the Real Estate Board of Greater Vancouver or the Fraser Valley Real Estate Board.

Listing information last updated on July 13th, 2020 at 7:18pm PDT